

NOTES: See Tabulated Sheet

1

Relief permits component shafts to near butt.

2

Hubs and HELI-CAL FLEXURE are made from a single piece of material.

3

Integral Clamp attachment, hex. socket, cap screw furnished: both hubs.

4

Backlash: None.  
No lubrication required.

5

Permitted axial motion from free length:  $\pm .010$ in.

6

RPM: Up to 10,000, depending upon application.

7

Working torque ratings are based upon continuous duty with noted misalignments applied separately and may be increased with improved alignment.

See Tabulated Sheet

8

Permissible shaft misalignment:

Angular, up to 5 degrees. Offset, up to .010in. (TIR, .020in.)

9

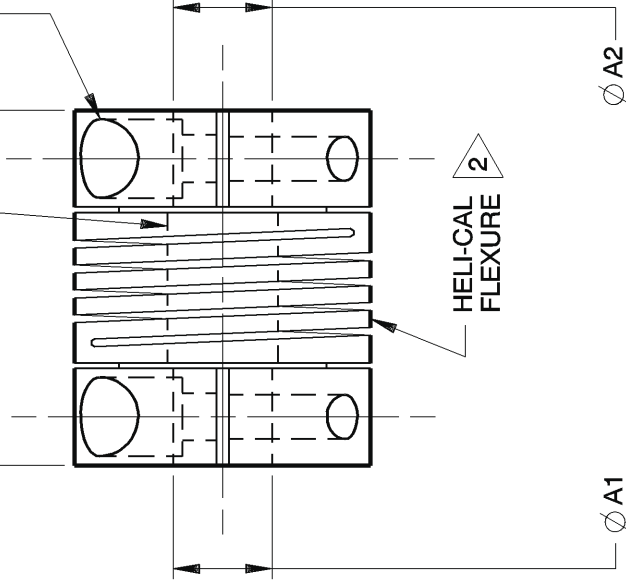
Part will have a .871in. Clearance Diameter on both ends when any bore is over .260in. thru .390in.

3

2X 4-40 Cap Screw

.90

1 Relief



ACR075-8-8 SHOWN

NOTICE: THE INFORMATION AND DATA CONTAINED HEREIN IS CONSIDERED PROPRIETARY TO HELICAL PRODUCTS COMPANY, AND SHALL REMAIN THE EXCLUSIVE PROPERTY OF HELICAL. THE HOLDER WILL ASSUME CUSTODY AND CONTROL THAT THIS DOCUMENT WILL NOT BE COPIED, REPRODUCED OR DISCLOSED WITHOUT THE EXPRESS WRITTEN CONSENT OF HELICAL. POSSESSION OF THIS DOCUMENT DOES NOT CONSTITUTE A GRANT TO MANUFACTURE ANY ITEMS.  
DO NOT SCALE DRAWING.

12-18-09 ---  
Finish was Chromic Acid Anodize; Updated GD&T  
1-25-99 No revision

REVISION  
LTR DATE  
JAJ HG  
BJM MC  
CHK

Unless otherwise noted dimensions in inches.  
Inch Fractions:  $\pm 1/64$   
Decimals: .XX  $\pm .00$   
.XXX  $\pm .005$   
.XXXX  $\pm .0010$   
Metric  
Decimals: X  $\pm 0.5mm$   
X.X  $\pm 0.25mm$   
X.XX  $\pm 0.15mm$   
Angles:  $\pm 2$  degrees  
Break sharp corners  
.010 max.

APPROVALS  
DRAWN MM 1-10-79  
CHECKED GLB 1-18-79  
PRODN APA 1-18-79  
ISSUED  
WEIGHT 15g (calc)  
SCALE 2/1 SIZE A

DATE  
TITLE  
MATERIAL  
FINISH  
DWG NO

HELICAL PRODUCTS CO.  
901 W McCoy Ln SANTA MARIA, CA. 93456 U.S.A  
PHONE (805) 928-3851 FSC13201  
HELICAL FLEXIBLE SHAFT COUPLING  
7075-T6 Aluminum Alloy  
Anodize per HPS1000

HELICAL FLEXIBLE SHAFT COUPLING  
7075-T6 Aluminum Alloy  
Anodize per HPS1000  
ACR075

ADDITION DATE	PART NUMBER	BORE TOLERANCES		TORQUES (lb.in)			TORSIONAL FLEXIBILITY	MASS MOMENT OF INERTIA	COMMENTS
		+002in -000in	+05mm -00mm	Non-reversing	Shock or Reversing	Momentary			
20 Aug 04	ACR075-4M-4M	.120in	.120in	9	4	18			
27 Apr 06	ACR075-4-2mm	.125in	2.00mm	12	6	24			
	ACR075-4-3M	.125in	.090in	12	6	24			
	ACR075-4-3	.125in	.094in	12	6	24			
	ACR075-4-2.5mm	.125in	2.50mm	12	6	24			
	ACR075-4-3mm	.125in	3.00mm	12	6	24			
23 Jun 88	ACR075-4-4M	.125in	.120in	12	6	24			
09 Mar 88	ACR075-4-4	.125in	.125in	12	6	24			
	ACR075-3.19mm-4	3.19mm	.125in	12	6	24			
23 Jun 88	ACR075-5-4M	.157in	.120in	11	5	22			
09 Mar 88	ACR075-5-4	.157in	.125in	11	5	22			
09 Mar 88	ACR075-5-5	.157in	.157in	11	5	22			
	ACR075-5-8	.157in	.250in	9	4	18			
09 Mar 88	ACR075-4mm-4	4.00mm	.125in	11	5	22			
12 Aug 05	ACR075-4mm-4mm	4.00mm	4.00mm	11	5	22			
23 Jun 88	ACR075-4.2mm-4	4.20mm	.125in	11	5	22			
	ACR075-4.62mm-4	4.62mm	.125in	10	5	20			
	ACR075-6-2mm	.188in	2.00mm	10	5	20			

**\* NOTE: Bore greater than .250in Dia: bore depth is .253in**

NOTICE: THE INFORMATION AND DATA CONTAINED HEREIN IS CONSIDERED PROPRIETARY TO HELICAL PRODUCTS COMPANY, AND SHALL REMAIN THE EXCLUSIVE PROPERTY OF HELICAL. THE HOLDER WILL ASSUME CUSTODY AND CONTROL THAT THIS DOCUMENT WILL NOT BE COPIED, REPRODUCED OR DISCLOSED WITHOUT THE EXPRESS WRITTEN CONSENT OF HELICAL. POSSESSION OF THIS DOCUMENT DOES NOT CONSTITUTE A GRANT TO MANUFACTURE ANY ITEMS.

**ADDITIONAL BORE SIZES AVAILABLE UPON REQUEST**

APPROVALS	DATE	HELICAL PRODUCTS CO.
DRAWN		901 W McCoy Ln Santa Maria, CA. 93456
CHECKED		PHONE (805) 928-3851
PRODN		TITLE <b>HELICAL FLEXIBLE SHAFT COUPLING</b>
ISSUED	7/13/2012 7:40:50 AM	<b>TABULATED BORE SIZES</b>
		DWG NO <b>ACR075</b>

ADDITION DATE	PART NUMBER	BORE TOLERANCES		TORQUES (lbin)			TORSIONAL FLEXIBILITY	MASS MOMENT OF INERTIA	COMMENTS	
		+002in -000in	+05mm -00mm	Non-reversing	Shock or Reversing	Momentary				
										A1 Dia
09 Mar 88	ACR075-6-3M	.188in	.090in	10	5	20			A1	A2
	ACR075-6-3	.188in	.094in	10	5	20				
	ACR075-6-2.5mm	.188in	2.50mm	10	5	20				
	ACR075-6-3mm	.188in	3.00mm	10	5	20				
09 Mar 88	ACR075-6-4M	.188in	.120in	10	5	20				
09 Mar 88	ACR075-6-4	.188in	.125in	10	5	20				
	ACR075-6-5	.188in	.157in	10	5	20				
	ACR075-6-4mm	.188in	4.00mm	10	5	20				
09 Mar 88	ACR075-6-6	.188in	.188in	10	5	20				
	ACR075-6-5mm	.188in	5.00mm	10	5	20				
12 Jun 12	ACR075-5mm-3	5.00mm	.094in	10	5	20				
23 Jun 88	ACR075-5mm-4	5.00mm	.125in	10	5	20				
	ACR075-5mm-5	5.00mm	.157in	10	5	20				
23 Jun 88	ACR075-5mm-4mm	5.00mm	4.00mm	10	5	20				
09 Mar 88	ACR075-5mm-6	5.00mm	.188in	10	5	20				
23 Jun 88	ACR075-5mm-5mm	5.00mm	5.00mm	10	5	20				
23 Jun 88	ACR075-5.11mm-4	5.11mm	.125in	10	5	20				
09 Mar 88	ACR075-5.16mm-4.73mm	5.16mm	4.73mm	10	5	19				
	ACR075-5.5mm-4	5.50mm	.125in	10	5	20				
	ACR075-7-4	.219in	.125in	9	4	18				
	ACR075-7-6	.219in	.188in	9	4	18				
09 Mar 88	ACR075-7-5mm	.219in	5.00mm	9	4	18				
	ACR075-7-7	.219in	.219in	9	4	18				
23 Jun 88	ACR075-6mm-5	5.90mm	.157in	9	5	18				
05 Aug 04	ACR075-5.9mm-5	5.90mm	.157in	9	4	18				
09 Mar 88	ACR075-5.99mm-6	5.99mm	.188in	9	4	18				
09 Mar 88	ACR075-6mm-3mm	6.00mm	3.00mm	9	4	18				
23 Jun 88	ACR075-6mm-4M	6.00mm	.120in	9	4	18				
09 Mar 88	ACR075-6mm-4	6.00mm	.125in	9	4	18				
23 Jun 88	ACR075-6mm-4mm	6.00mm	4.00mm	9	4	18				
23 Jun 88	ACR075-6mm-6	6.00mm	.188in	9	4	18				

**\* NOTE: Bores greater than .250in Dia: bore depth is .253in**

NOTICE: THE INFORMATION AND DATA CONTAINED HEREIN IS CONSIDERED PROPRIETARY TO HELICAL PRODUCTS COMPANY, AND SHALL REMAIN THE EXCLUSIVE PROPERTY OF HELICAL. THE HOLDER WILL ASSUME CUSTODY AND CONTROL THAT THIS DOCUMENT WILL NOT BE COPIED, REPRODUCED OR DISCLOSED WITHOUT THE EXPRESS WRITTEN CONSENT OF HELICAL. POSSESSION OF THIS DOCUMENT DOES NOT CONSTITUTE A GRANT TO MANUFACTURE ANY ITEMS.

**ADDITIONAL BORE SIZES AVAILABLE UPON REQUEST**

APPROVALS	DATE	HELICAL PRODUCTS CO. 901 W McCoy Ln Santa Maria, CA. 93456 PHONE (805) 928-3851
DRAWN		
CHECKED		TITLE HELICAL FLEXIBLE SHAFT COUPLING
PRODN		<b>TABULATED BORE SIZES</b>
ISSUED	7/13/2012 7:40:50 AM	DWG NO ACR075

ADDITION DATE	PART NUMBER	BORE TOLERANCES		TORQUES (lbin)			TORSIONAL FLEXIBILITY deg/lbin	MASS MOMENT OF INERTIA	COMMENTS	
		+002in -000in	+05mm -00mm	Non-reversing	Shock or Reversing	Momentary				
										A1 Dia
09 Mar 88	ACR075-6mm-5mm	6.00mm	5.00mm	9	4	18			A1	A2
09 Mar 88	ACR075-6mm-7	6.00mm	.219in	9	4	18				
09 Mar 88	ACR075-6mm-6mm	6.00mm	6.00mm	9	4	18				
09 Mar 88	ACR075-8M-4M	.240in	.120in	9	4	18				
09 Mar 88	ACR075-8M-6	.240in	.188in	9	4	18				
09 Mar 88	ACR075-8M-6mm	.240in	6.00mm	9	4	18				
09 Mar 88	ACR075-8M-8M	.240in	.240in	9	4	18				
02 Nov 04	ACR075-6.1mm-6.1mm	6.10mm	6.10mm	9	4	18				
09 Mar 88	ACR075-6.27mm-3mm	6.27mm	3.00mm	9	4	18				
09 Mar 88	ACR075-6.27mm-4M	6.27mm	.120in	9	4	18				
25 Feb 00	ACR075-6.3mm-5mm	6.30mm	5.00mm	9	4	18				
09 Mar 88	ACR075-8-2mm	.250in	2.00mm	9	4	18				
23 Jun 88	ACR075-8-2.18mm	.250in	2.18mm	9	4	18				
23 Jun 88	ACR075-8-3M	.250in	.090in	9	4	18				
09 Mar 88	ACR075-8-3	.250in	.094in	9	4	18				
09 Mar 88	ACR075-8-2.5mm	.250in	2.50mm	9	4	18				
09 Mar 88	ACR075-8-3mm	.250in	3.00mm	9	4	18				
09 Mar 88	ACR075-8-4M	.250in	.120in	9	4	18				
09 Mar 88	ACR075-8-4	.250in	.125in	9	4	18				
09 Mar 88	ACR075-8-5	.250in	.157in	9	4	18				
23 Jun 88	ACR075-8-4mm	.250in	4.00mm	9	4	18				
23 Jun 88	ACR075-8-4.42mm	.250in	4.42mm	9	4	18				
18 Nov 88	ACR075-8-4.5mm	.250in	4.50mm	9	4	18				
09 Mar 88	ACR075-8-4.62mm	.250in	4.62mm	9	4	18				
09 Mar 88	ACR075-8-6	.250in	.188in	9	4	18				
09 Mar 88	ACR075-8-5mm	.250in	5.00mm	9	4	18				
17 Feb 00	ACR075-8-5.08mm	.250in	5.08mm	9	4	18				
23 Jun 88	ACR075-8-5.11mm	.250in	5.11mm	9	4	18				
	ACR075-8-5.5mm	.250in	5.50mm	9	4	18				
09 Mar 88	ACR075-8-5.52mm	.250in	5.52mm	9	4	18				
05 Jun 05	ACR075-8-5.53mm	.250in	5.53mm	9	4	18				

**\* NOTE: Bore greater than .250in Dia: bore depth is .253in**

NOTICE: THE INFORMATION AND DATA CONTAINED HEREIN IS CONSIDERED PROPRIETARY TO HELICAL PRODUCTS COMPANY, AND SHALL REMAIN THE EXCLUSIVE PROPERTY OF HELICAL. THE HOLDER WILL ASSUME CUSTODY AND CONTROL THAT THIS DOCUMENT WILL NOT BE COPIED, REPRODUCED OR DISCLOSED WITHOUT THE EXPRESS WRITTEN CONSENT OF HELICAL. POSSESSION OF THIS DOCUMENT DOES NOT CONSTITUTE A GRANT TO MANUFACTURE ANY ITEMS.

**ADDITIONAL BORE SIZES AVAILABLE UPON REQUEST**

APPROVALS	DATE	HELICAL PRODUCTS CO. 901 W McCoy Ln Santa Maria, CA. 93456 PHONE (805) 928-3851
DRAWN		
CHECKED		TITLE HELICAL FLEXIBLE SHAFT COUPLING
PRODN		<b>TABULATED BORE SIZES</b>
ISSUED	7/13/2012 7:40:50 AM	DWG NO ACR075

ADDITION DATE	PART NUMBER	BORE TOLERANCES		TORQUES (lbin)			TORSIONAL FLEXIBILITY	MASS MOMENT OF INERTIA	COMMENTS	A1	A2	
		+002in -000in	+05mm -00mm	Non-reversing	Shock or Reversing	Momentary						deg/lbin
09 Mar 88	ACR075-8-7	.250in	.219in	9	4	18						
09 Mar 88	ACR075-8-5.72mm	.250in	5.72mm	9	4	18						
09 Mar 88	ACR075-8-5.79mm	.250in	5.79mm	9	4	18						
09 Mar 88	ACR075-8-6mm	.250in	6.00mm	9	4	18						
09 Mar 88	ACR075-8-8M	.250in	.240in	9	4	18						
	ACR075-8-6.15mm	.250in	6.15mm	9	4	18						
09 Mar 88	ACR075-8-6.3mm	.250in	6.30mm	9	4	18						
09 Mar 88	ACR075-8-8	.250in	.250in	9	4	18						
04 Dec 07	ACR075-6.36mm-6.01mm	* 6.36mm	6.01mm	9	4	18						
	ACR075-6.4mm-8	* 6.40mm	.250in	9	4	18						
22 Dec 11	ACR075-6.5mm-3.2mm	* 6.50mm	3.20mm	9	4	18						
	ACR075-6.5mm-5	* 6.50mm	.157in	9	4	18						
26 Oct 88	ACR075-6.5mm-6mm	* 6.50mm	6.00mm	9	4	18						
	ACR075-7mm-8	* 7.00mm	.250in	9	4	18					Clearance Diam.: .871in	
09 Mar 88	ACR075-10-6	* .313in	.188in	9	4	18					Clearance Diam.: .871in	
16 Jul 04	ACR075-10-6mm	* .313in	6.00mm	9	4	18					Clearance Diam.: .871in	
09 Mar 88	ACR075-10-8	* .313in	.250in	9	4	18					Clearance Diam.: .871in	
23 Jun 88	ACR075-8mm-4M	* 8.00mm	.120in	9	4	18					Clearance Diam.: .871in	
23 Jun 88	ACR075-8mm-6mm	* 8.00mm	6.00mm	9	4	18					Clearance Diam.: .871in	
09 Mar 88	ACR075-8mm-8	* 8.00mm	.250in	9	4	18					Clearance Diam.: .871in	
21 Sep 88	ACR075-12-5	* .375in	.157in	9	4	18					Clearance Diam.: .871in	
11 Apr 01	ACR075-12-6	* .375in	.188in	9	4	18					Clearance Diam.: .871in	
	ACR075-12-5.08mm	* .375in	5.08mm	9	4	18					Clearance Diam.: .871in	
	ACR075-12-6mm	* .375in	6.00mm	9	4	18					Clearance Diam.: .871in	
09 Mar 88	ACR075-12-8	* .375in	.250in	9	4	18					Clearance Diam.: .871in	
26 Oct 88	ACR075-10mm-8	*10.00mm	.250in	9	4	18					Clearance Diam.: .871in	
15 JUL 15	ACR075-4.78mm-2mm	4.78mm	2.00mm	10	5	20					Clearance Diam.: .871in	
03 DEC 15	ACR075-6-2.3mm	.188in	2.30mm	10	5	20					Clearance Diam.: .871in	
24 Apr 17	ACR075-8-5.33mm	.250in	5.33mm	16	4	20					Clearance Diam.: .871in	
06 JUN 17	ACR075-6.46mm-4.75mm	* 6.46mm	4.75mm	9	4	18					Clearance Diam.: .871in	

\* NOTE: Bores greater than .250in Dia: bore depth is .253in

NOTICE: THE INFORMATION AND DATA CONTAINED HEREIN IS CONSIDERED PROPRIETARY TO HELICAL PRODUCTS COMPANY, AND SHALL REMAIN THE EXCLUSIVE PROPERTY OF HELICAL. THE HOLDER WILL ASSUME CUSTODY AND CONTROL THAT THIS DOCUMENT WILL NOT BE COPIED, REPRODUCED OR DISCLOSED WITHOUT THE EXPRESS WRITTEN CONSENT OF HELICAL. POSSESSION OF THIS DOCUMENT DOES NOT CONSTITUTE A GRANT TO MANUFACTURE ANY ITEMS.

**ADDITIONAL BORE SIZES AVAILABLE UPON REQUEST**

APPROVALS	DATE	HELICAL PRODUCTS CO.
DRAWN		901 W McCoy Ln Santa Maria, CA. 93456
CHECKED		PHONE (805) 928-3851
PRODN		TITLE HELICAL FLEXIBLE SHAFT COUPLING
ISSUED	7/13/2012 7:40:50 AM	<b>TABULATED BORE SIZES</b>
		DWG NO ACR075