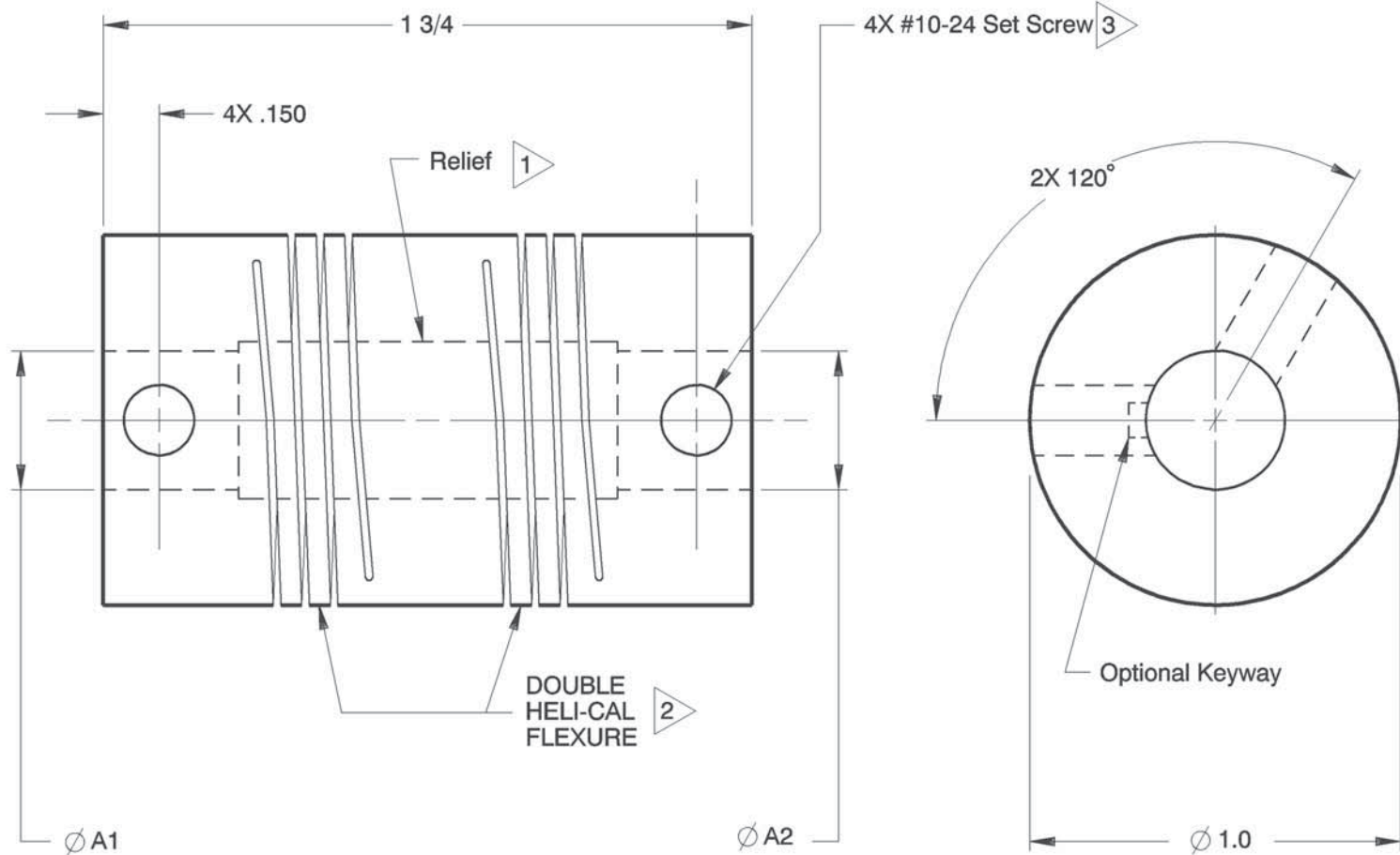


NOTES: See Tabulated Sheet

- 1 Relief permits component shafts to near butt.
- 2 Hubs and HELI-CAL FLEXURE are made from a single piece of material.
- 3 Set Screw attachment, hex. socket, cup point set screw furnished: both hubs. Set Screw size based on bore size:
 .118in thru .124in : 2-56
 .125in thru .155in : 4-40
 .156in thru .235in : 6-32
 .236in thru .630in : 10-24
- 4 Backlash: None. No lubrication required.
- 5 Permitted axial motion from free length: ± .010in
- 6 Working torque ratings are based upon continuous duty with noted misalignments applied separately and may be increased with improved alignment: See Tabulated Sheet
- 7 Permissible shaft misalignment:
 Angular, up to 5 degrees.
 Offset, up to .030in (TIR, .060in)



MCA100-12-12 SHOWN

NOTICE: THE INFORMATION AND DATA CONTAINED HEREIN IS CONSIDERED PROPRIETARY TO HELICAL PRODUCTS COMPANY, INC., AND SHALL REMAIN THE EXCLUSIVE PROPERTY OF HELICAL. THE HOLDER WILL ASSUME CUSTODY AND CONTROL THAT THIS DOCUMENT WILL NOT BE COPIED, REPRODUCED OR DISCLOSED WITHOUT THE EXPRESS WRITTEN CONSENT OF HELICAL. POSSESSION OF THIS DOCUMENT DOES NOT CONSTITUTE A GRANT TO MANUFACTURE ANY ITEMS.

DO NOT SCALE DRAWING.

01-25-10	---	Finish was Chromic Acid Anodize; Updated GD&T	HG	JAJ
11-18-98		Clerical format update/ No revision	BJM	MC
DATE	LTR	REVISION	CHK	

Unless otherwise noted dimensions in inches.

Tolerances are:
 Fractions: ± 1/64
 Decimals: .XX ± .010
 .XXX ± .005
 .XXXX ± .0010
 Angles: ± 2 degrees
 Break sharp corners .010 max.

APPROVALS	DATE
DRAWN MC	11-7-80
CHECKED MC	11-7-80
PRODN APA	11-7-80
ISSUED	
WEIGHT	54g (calc)
SCALE	2/1
SIZE	A

HELICAL PRODUCTS CO.	
P.O. BOX 1069 SANTA MARIA, CA. 93456 U.S.A PHONE (805) 928-3851 FSC13201	
TITLE	HELICAL FLEXIBLE SHAFT COUPLING
MATERIAL	7075-T6 Aluminum Alloy
FINISH	Anodize per HPS1000
DWG NO	MCA100

ADDITION DATE	PART NUMBER	BORE TOLERANCES		TORQUES (lbin)			TORSIONAL FLEXIBILITY deg/lbin	MASS MOMENT OF INERTIA	COMMENTS	A1	A2
		+.002in -.000in	or +.05mm -.00mm	Non-reversing	Shock or Reversing	Momentary					
09 Mar 88	MCA100-4mm-4mm	4.00mm	4.00mm	14	7	28					
09 Mar 88	MCA100-6-6	.188in	.188in	14	7	28					
	MCA100-5.9mm-5.9mm	5.90mm	5.90mm	14	7	28					
09 Mar 88	MCA100-8-8	.250in	.250in	14	7	28					
06 Oct 88	MCA100-10-6	.313in	.188in	12	6	24					
09 Mar 88	MCA100-10-5.08mm	.313in	5.08mm	12	6	24					
09 Mar 88	MCA100-10-8	.313in	.250in	12	6	24					
09 Mar 88	MCA100-10-10	.313in	.313in	12	6	24					
06 Dec 07	MCA100-8mm-8mm	8.00mm	8.00mm	12	6	24					
13 Aug 08	MCA100-9mm-6mm	9.00mm	6.00mm	11	5	22					
	MCA100-12-4.58mm	.375in	4.58mm	10	5	20					
29 Jun 88	MCA100-12-6	.375in	.188in	10	5	20					
16 Jan 91	MCA100-12-6mm	.375in	6.00mm	10	5	20					
09 Mar 88	MCA100-12-8	.375in	.250in	10	5	20					
09 Mar 88	MCA100-12-10	.375in	.313in	10	5	20					
	MCA100-12-8mm	.375in	8.00mm	10	5	20					
09 Mar 88	MCA100-12-12	.375in	.375in	10	5	20					
09 Mar 88	MCA100-12K1-12K1	.375in	.375in	10	5	20		Keyway Width: .094/.096in	.094/.096in		
20 Oct 88	MCA100-10mm-6mm	10.00mm	6.00mm	10	5	20					
20 Oct 88	MCA100-10mm-8	10.00mm	.250in	10	5	20					
29 Jun 88	MCA100-10mm-12	10.00mm	.375in	10	5	20					
09 Mar 88	MCA100-10mm-10mm	10.00mm	10.00mm	10	5	20					
18 Sep 90	MCA100-10.02mm-6mm	*10.02mm	6.00mm	10	5	20					
06 Oct 89	MCA100-11mm-4	*11.00mm	.125in	10	5	20					
06 Oct 89	MCA100-11mm-8	*11.00mm	.250in	10	5	20					
27 Nov 90	MCA100-11mm-10mm	*11.00mm	10.00mm	10	5	20					
20 Jul 05	MCA100-14-10	*.438in	.313in	10	5	20					
13 Aug 10	MCA100-12mm-10mm	*12.00mm	10.00mm	10	5	20					
	MCA100-16-8	*.500in	.250in	10	5	20					
	MCA100-16-10K1	*.500in	.313in	10	5	20		Keyway Width:		.094/.096in	
09 Mar 88	MCA100-16-10	*.500in	.313in	10	5	20					

* NOTE: Bores greater than .394in Dia: bore depth is .370in

NOTICE: THE INFORMATION AND DATA CONTAINED HEREIN IS CONSIDERED PROPRIETARY TO HELICAL PRODUCTS COMPANY, INC., AND SHALL REMAIN THE EXCLUSIVE PROPERTY OF HELICAL. THE HOLDER WILL ASSUME CUSTODY AND CONTROL THAT THIS DOCUMENT WILL NOT BE COPIED, REPRODUCED OR DISCLOSED WITHOUT THE EXPRESS WRITTEN CONSENT OF HELICAL. POSSESSION OF THIS DOCUMENT DOES NOT CONSTITUTE A GRANT TO MANUFACTURE ANY ITEMS.

ADDITIONAL BORE SIZES AVAILABLE UPON REQUEST

APPROVALS	DATE
DRAWN	
CHECKED	
PRODN	
ISSUED	8/16/2010 7: 53: 32 AM

HELICAL PRODUCTS CO.
P.O. BOX 1069 SANTA MARIA, CA. 93456 U.S.A
PHONE (805) 928-3851 FSCI3201

TITLE: **HELICAL FLEXIBLE SHAFT COUPLING**

TABULATED BORE SIZES

DWG NO: **MCA100**

Printed 8/16/2010 7: 53: 50 AM by Julesu

ADDITION DATE	PART NUMBER	BORE TOLERANCES		TORQUES (lbin)			TORSIONAL FLEXIBILITY deg/lbin	MASS MOMENT OF INERTIA	COMMENTS	A1	A2
		+0.002in -0.000in	or +0.05mm -0.00mm	Non-reversing	Shock or Reversing	Momentary					
		A1 Dia	A2 Dia								
09 Mar 88	MCA100-16-12	* .500in	.375in	10	5	20					
09 Mar 88	MCA100-16-16	* .500in	* .500in	10	5	20					
04 Jan 05	MCA100-14mm-8	*14.00mm	.250in	10	5	20					
15 Jun 05	MCA100-14mm-8mm	*14.00mm	8.00mm	10	5	20					
25 May 90	MCA100-14.7mm-11mm	*14.70mm	*11.00mm	10	5	20					
09 Mar 88	MCA100-15mm-10mm	*15.00mm	10.00mm	10	5	20					
	MCA100-20-12	* .625in	.375in	10	5	20					
	MCA100-20K4-12K1	* .625in	.375in	10	5	20			Keyway Width:	.188/.190in.094/.096in	

continued on next sheet

<p>* NOTE: Bores greater than .394in Dia: bore depth is .370in</p>		APPROVALS	DATE	<p>HELICAL PRODUCTS CO P.O. BOX 1069 SANTA MARIA, CA. 93456 U.S.A PHONE (805) 928-3851 FSCI3201</p>	
<p>NOTICE: THE INFORMATION AND DATA CONTAINED HEREIN IS CONSIDERED PROPRIETARY TO HELICAL PRODUCTS COMPANY, INC., AND SHALL REMAIN THE EXCLUSIVE PROPERTY OF HELICAL. THE HOLDER WILL ASSUME CUSTODY AND CONTROL THAT THIS DOCUMENT WILL NOT BE COPIED, REPRODUCED OR DISCLOSED WITHOUT THE EXPRESS WRITTEN CONSENT OF HELICAL. POSSESSION OF THIS DOCUMENT DOES NOT CONSTITUTE A GRANT TO MANUFACTURE ANY ITEMS.</p> <p>ADDITIONAL BORE SIZES AVAILABLE UPON REQUEST</p>		DRAWN		TITLE: HELICAL FLEXIBLE SHAFT COUPLING	
		CHECKED		TABULATED BORE SIZES	
		PRODN		MCA100	
		ISSUED	8/16/2010 7: 53: 32 AM	DWG NO	

Printed 8/16/2010 7: 53: 50 AM by Julesu

TABULATED DATA

Copyright HELICAL PRODUCTS CO

MATERIAL: 7075-T6 Aluminum Alloy

FINISH: Natural

Drawing Number

MCA100

REV

DO NOT SCALE DRAWING

SHT 4 of 4

ITEM DESCRIPTION (Part Number)	BORE SIZES		TORQUES (lbin)			KEYWAY Width	
	TOLERANCE +.002in or +0.05mm -.000 or 0		Momentary Dynamic	Non- Reversing	Shock or Reversing	TOLERANCE +.002in or +0.05mm -.000in or 0	
Ø A1	Ø A2	W1				W2	
MCA100-8mm-8	8.00mm	.250in	24	12	6	---	---
MCA100-10mm-3mm	10.00mm	3.00mm	20	10	5	---	---
MCA100-12K1-10K1	.375in	.313in	20	10	5	.094in	.094in
MCA100-20K4-12mmQ5	.625in	12.00mm	20	10	5	.188in	5.00mm
MCA100-20K4-10mmQ3	.625in	10.00mm	20	10	5	.188in	3.00mm
MCA100-16-10mm	.500in	10.00mm	20	10	5	---	---