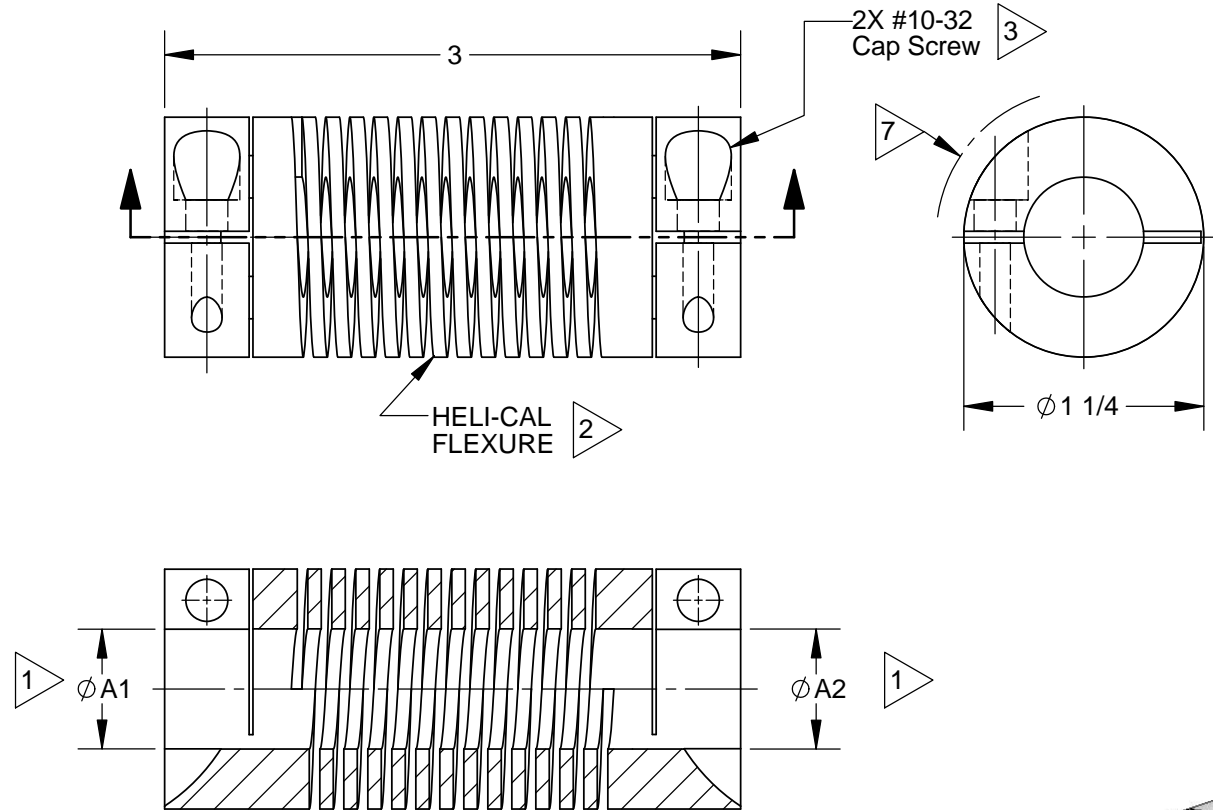
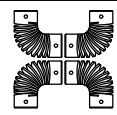


**NOTES:**

- 1 Restricted bores:  
 MAX shaft penetration:  
 A1 bore- .56  
 A2 bore- .56  
  
 Minimum shaft end to shaft end: 1.88
- 2 Hubs and HELI-CAL FLEXURE are made from a single piece of material.
- 3 Integral Clamp Attachment, hex socket, ISO std., cap screw furnished: both hubs
- 4 Backlash: None.  
 No lubrication required.
- 5 Working torque ratings are based upon continuous duty with noted misalignments applied separately and may be increased with improved alignment:  
 See Tabulated Sheet
- 6 Permissible shaft misalignment:  
 Angular, up to 45 degrees.
- 7 Clearance Diameter on both ends: 1.294



Description: <b>HELICAL FLEXURED U JOINT</b>					
Finish: <b>Natural</b>			Material: <b>17-4PH CRES HT</b>		
Unless Otherwise Specified All Tolerances & Dimensions are in Inches <b>INCH</b> Angles <b>METRIC</b> X/XX = ± 1/64      ± 2°      X = ± 0.5mm .XX = ± .01      X.X = ± 0.25mm .XXX = ± .005      X.XX = ± 0.15mm					
All surface finish 63 roughness Break all sharp corners .010 MAX Interpret IAW ASME Y14.5 2009					
Date	Ltr.	Revision	Drwn.	Chk.	App.
MH/08-28-2017		BMS/01-18-2018		EK/01-22-2018	
Drawn By/Date	Checked By/Date	Approved By/Date	DO NOT SCALE DRAWING   SCALE: 1:1		



**HELICAL**  
 PRODUCTS COMPANY  
 901 West McCoy Lane  
 SANTA MARIA, CA. 93456 U.S.A.  
 PHONE (805) 928-3851 FSC13201

NOTICE: THE INFORMATION AND DATA CONTAINED HEREIN IS CONSIDERED PROPRIETARY TO HELICAL PRODUCTS COMPANY, AND SHALL REMAIN THE EXCLUSIVE PROPERTY OF HELICAL. THE HOLDER WILL ASSUME CUSTODY AND CONTROL THAT THIS DOCUMENT WILL NOT BE COPIED, REPRODUCED OR DISCLOSED WITHOUT THE EXPRESS WRITTEN CONSENT OF HELICAL. POSSESSION OF THIS DOCUMENT DOES NOT CONSTITUTE A GRANT TO MANUFACTURE ANY ITEM.  
 Copyright HELICAL PRODUCTS CO.

**TABULATED DATA**  
Copyright HELICAL PRODUCTS CO.

Finish: **Natural**

Material: **17-4PH CRES HT**

Drawing No.: **UJ7C125-45**

Sales Sht. No.: **2 of 2** Rev. **A**

DO NOT SCALE DRAWING

DESCRIPTION	BORE SIZES		TORQUES (Lbin)		
	TOLERANCE +.002in or +0.05mm -.000 0		Momentary Dynamic	Non- Reversing	Shock or Reversing
Ø A1	Ø A2				
UJ7C125-45-12-12	.375in	.375in	97	49	24
UJ7C125-45-16-16	.500in	.500in	81	40	20