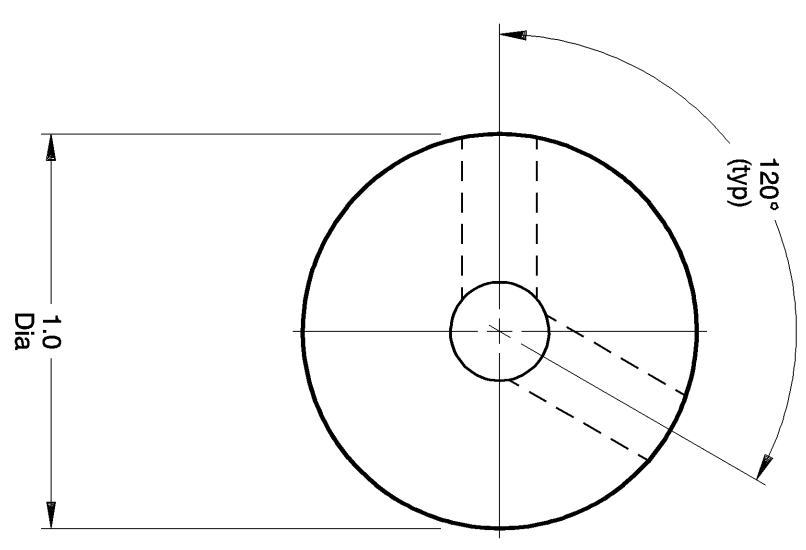
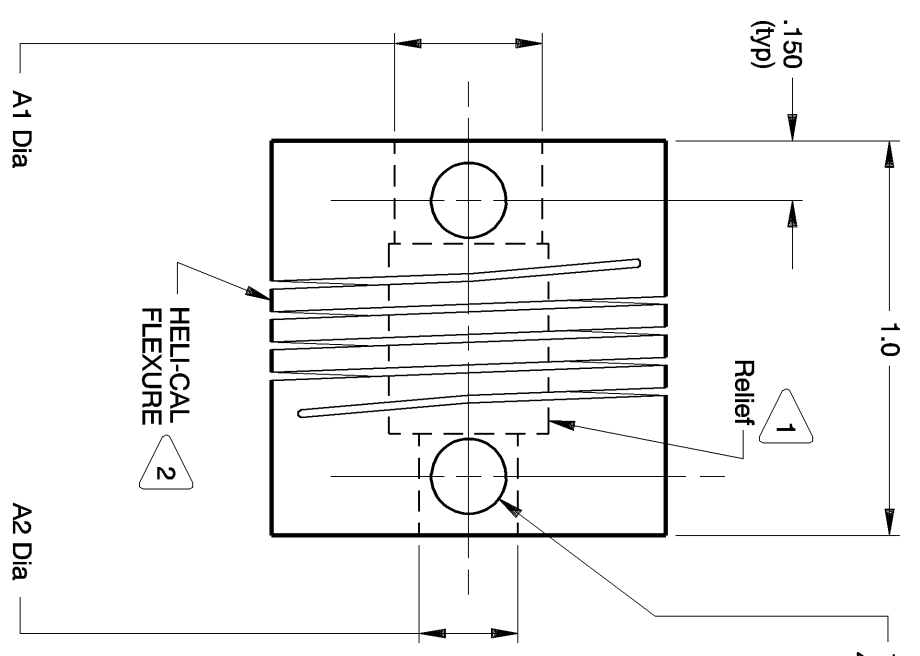


NOTES: See Tabulated Sheet

- 1 Relief permits component shafts to near butt.
- 2 Hubs and HELICAL FLEXURE are made from a single piece of material.
- 3 Set Screw attachment, hex socket, cup point set screw furnished: both hubs.
- Set Screw size based on bore size:  
 .090in thru .093in : 1-72  
 .094in thru .124in : 2-56  
 .125in thru .155in : 4-40  
 .156in thru .235in : 6-32  
 .236in thru .630in : 10-32
- 4 Backlash: None.  
No lubrication required.
- 5 Permitted axial motion from free length:  $\pm .010$ in.
- 6 RPM: Up to 10,000, depending upon application.
- 7 Working torque ratings are based upon continuous duty with noted misalignments applied separately and may be increased with improved alignment.
- See Tabulated Sheet
- 8 Permissible shaft misalignment:  
 Angular, up to 5 degrees  
 Offset, up to .010in.  
 (TR, .020in.)



HR100-12-8 SHOWN

NOTICE: THE INFORMATION AND DATA CONTAINED HEREIN IS CONSIDERED PROPRIETARY TO HELICAL PRODUCTS COMPANY, INC., AND SHALL REMAIN THE EXCLUSIVE PROPERTY OF SAID COMPANY. THE HOLDER OF THIS DOCUMENT WILL NOT BE COPIED, REPRODUCED OR DISCLOSED WITHOUT THE EXPRESS WRITTEN CONSENT OF HELICAL. POSSESSION OF THIS DOCUMENT DOES NOT CONSTITUTE A GRANT TO MANUFACTURE ANY ITEMS. DO NOT SCALE DRAWINGS.

DATE	LTR	REVISION	CHK
5-21-99		Clerical format update/ No revision	MC
		BJM	

Unless otherwise noted dimensions in inches.  
 Tolerances are:  
 Fractions:  $\pm 1/64$   
 Decimals: .XX  $\pm .010$   
 .XXX  $\pm .005$   
 .XXXX  $\pm .0010$   
 Angles:  $\pm 2$  degrees  
 Break sharp corners .010 max.

APPROVALS		DATE	TITLE
DRAWN	MM	11-19-79	HELICAL PRODUCTS CO., INC. P.O. BOX 1069 SANTA MARIA, CA. 93456 U.S.A PHONE (805) 928-3851 FSC13201
CHECKED	MC	11-19-79	
PRODN	APA	11-19-79	
ISSUED			HELICAL FLEXIBLE SHAFT COUPLING
WEIGHT	85g (calc)		MATERIAL 17-4PH CRES HT
SCALE	2/1	SIZE A	FINISH Natural
			DWG NO <b>HR100</b>

ADDITION DATE	PART NUMBER	BORE TOLERANCES		TORQUES (lb in)			TORSIONAL FLEXIBILITY	MASS MOMENT OF INERTIA	COMMENTS
		A1 Dia	A2 Dia	Non-reversing	Shock or Reversing	Momentary			
	HR100-5mm-5mm	+0.02in -0.00in	+0.05mm -0.00mm	27	13	54			
	HR100-8-6	.250in	.188in	26	13	52			
	HR100-8-5mm	.250in	5.00mm	26	13	52			
	HR100-8-5.6mm	.250in	5.60mm	26	13	52			
09 Mar 88	HR100-8-8	.250in	.250in	26	13	52			
	HR100-10-6	.313in	.188in	23	12	47			
09 Mar 88	HR100-10-8	.313in	.250in	23	12	47			
27 Jun 88	HR100-10-10	.313in	.313in	23	12	47			
01 Mar 90	HR100-8mm-8	8.00mm	.250in	23	12	47			
	HR100-12-5	8.00mm	8.00mm	23	12	47			
09 Mar 88	HR100-12-6	.375in	.157in	21	10	42			
02 May 05	HR100-12-5mm	.375in	.188in	21	10	42			
	HR100-12-6mm	.375in	5.00mm	21	10	42			
09 Mar 88	HR100-12-8	.375in	6.00mm	21	10	42			
09 Mar 88	HR100-12-10	.375in	.250in	21	10	42			
	HR100-12-8mm	.375in	.313in	21	10	42			
09 Mar 88	HR100-12-12	.375in	8.00mm	21	10	42			
21 Feb 03	HR100-9.9mm-12	* 9.90mm	.375in	21	11	42			
	HR100-10mm-10	*10.00mm	.313in	21	10	42			
	HR100-10mm-12	*10.00mm	.375in	21	10	42			
	HR100-14-8	*.438in	.250in	21	10	42			
	HR100-14-10	*.438in	.313in	21	11	42			
06 Aug 03	HR100-14-12	*.438in	.375in	21	11	42			
10 Nov 89	HR100-16-12	*.500in	.375in	21	10	42			

\* NOTE: Bores greater than .375in Dia: bore depth is .260in

NOTICE: THE INFORMATION AND DATA CONTAINED HEREIN IS CONSIDERED PROPRIETARY TO HELICAL PRODUCTS COMPANY, INC., AND SHALL REMAIN THE EXCLUSIVE PROPERTY OF HELICAL. THE HOLDER WILL ASSUME CUSTODY AND CONTROL THAT THIS DOCUMENT WILL NOT BE COPIED, REPRODUCED OR DISCLOSED WITHOUT THE EXPRESS WRITTEN CONSENT OF HELICAL. POSSESSION OF THIS DOCUMENT DOES NOT CONSTITUTE A GRANT TO MANUFACTURE ANY ITEMS.

**ADDITIONAL BORE SIZES AVAILABLE UPON REQUEST**

APPROVALS	DATE	TITLE
DRAWN		HELICAL FLEXIBLE SHAFT COUPLING
CHECKED		TABULATED BORE SIZES
PRODN		
ISSUED	4/25/2006 10:07:16 AM	DWG NO HR100

HELICAL PRODUCTS CO. INC  
P.O. BOX 1069 SANTA MARIA, CA, 93456 U.S.A  
PHONE (805) 928-3851(FSC13201)