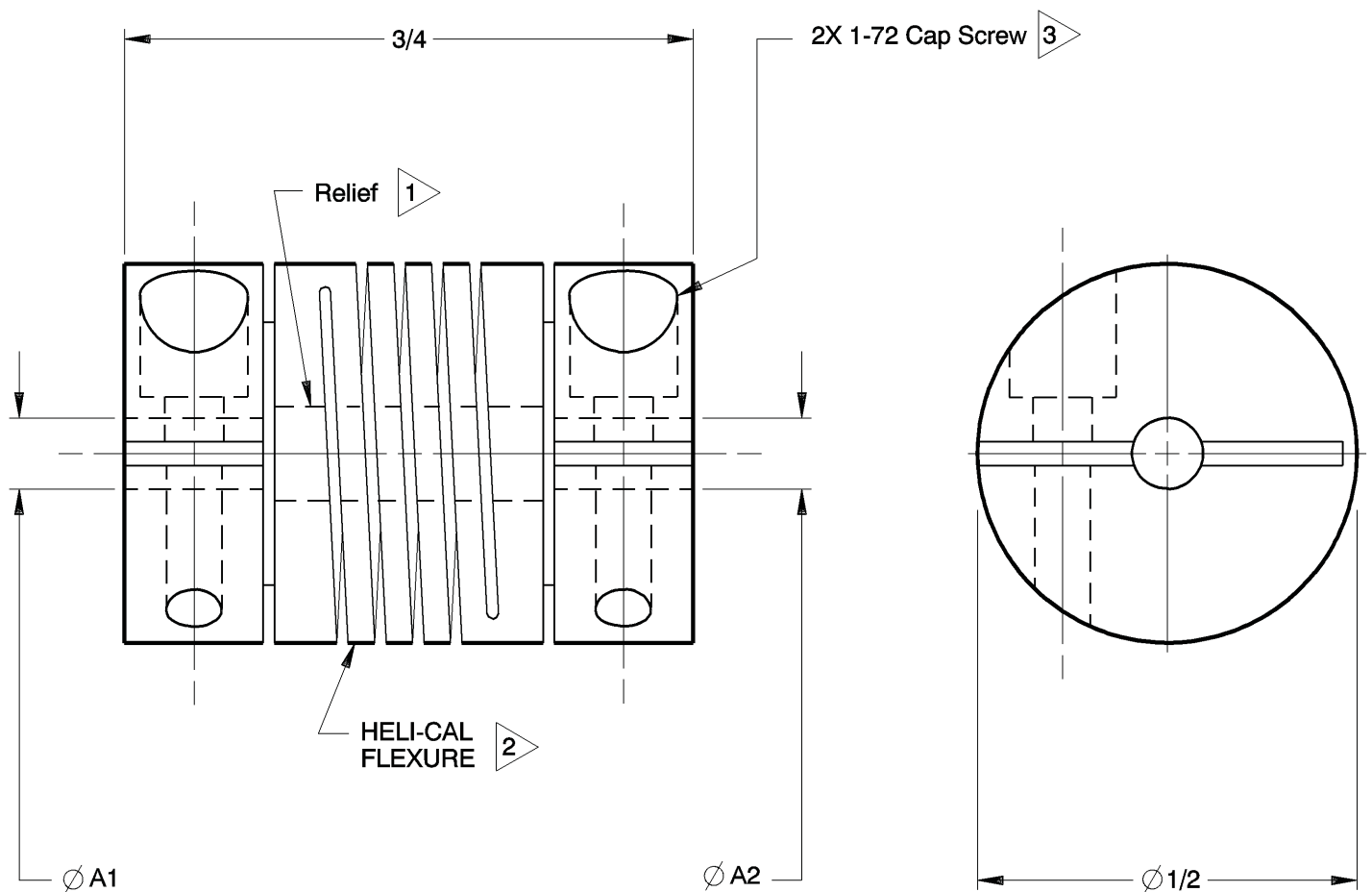


NOTES: See Tabulated Sheet

- 1 Relief permits component shafts to near butt.
- 2 Hubs and HELI-CAL FLEXURE are made from a single piece of material.
- 3 Integral Clamp attachment, hex. socket, cap screw furnished: both hubs.
- 4 Backlash: None. No lubrication required.
- 5 Permitted axial motion from free length: $\pm .010$ in.
- 6 RPM: Up to 10,000, depending upon application.
- 7 Working torque ratings are based upon continuous duty with noted misalignments applied separately and may be increased with improved alignment:
See Tabulated Sheet
- 8 Permissible shaft misalignment:
Angular, up to 5 degrees.
Offset, up to .010in.
(TIR, .020in.)
- 9 Part will have a .566in. Clearance Diameter on both ends when any bore is over .160in. thru .235in.



ACR050-3-3 SHOWN

NOTICE: THE INFORMATION AND DATA CONTAINED HEREIN IS CONSIDERED PROPRIETARY TO HELICAL PRODUCTS COMPANY, INC., AND SHALL REMAIN THE EXCLUSIVE PROPERTY OF HELICAL. THE HOLDER WILL ASSUME CUSTODY AND CONTROL THAT THIS DOCUMENT WILL NOT BE COPIED, REPRODUCED OR DISCLOSED WITHOUT THE EXPRESS WRITTEN CONSENT OF HELICAL. POSSESSION OF THIS DOCUMENT DOES NOT CONSTITUTE A GRANT TO MANUFACTURE ANY ITEMS.

DO NOT SCALE DRAWING.

12-18-09	---	Finish was Chromic Acid Anodize; Updated GD&T	HG	JAJ	Unless otherwise noted dimensions in inches. Inch Fractions: $\pm 1/64$ Decimals: .XX $\pm .010$.XXX $\pm .005$.XXX $\pm .0010$ Metric Decimals: X ± 0.5 mm X.X ± 0.25 mm X.XX ± 0.15 mm Angles: ± 2 degrees Break sharp corners .010 max.	APPROVALS	DATE	<p>HELICAL PRODUCTS CO., 901 W. McCOY LANE, SANTA MARIA, CA 93455 PHONE (805) 928-3851 FSC13201</p>	
						DRAWN	MM		2-21-79
CHECKED	MC	2-21-79	TITLE	HELICAL FLEXIBLE SHAFT COUPLING					
PRODN	APA	2-21-79	MATERIAL	7075-T6 Aluminum Alloy					
ISSUED			FINISH	Anodize per HPS1000					
1-25-99		Clerical format update/ No revision	BJM	MC		WEIGHT	6g (calc)	DWG NO	ACR050
DATE	LTR	REVISION	CHK			SCALE	4/1	SIZE	A

ADDITION DATE	PART NUMBER	BORE TOLERANCES		TORQUES (lbin)			TORSIONAL FLEXIBILITY deg/lbin	MASS MOMENT OF INERTIA	COMMENTS	A1	A2
		+0.002in -0.000in	or +0.05mm -0.00mm	Non-reversing	Shock or Reversing	Momentary					
		A1 Dia	A2 Dia								
20 Dec 11	ACR050-3M-3M	.090in	.090in	4.0	2.0	8.0					

*** NOTE: Bores greater than .125in Dia: bore depth is .190in**

NOTICE: THE INFORMATION AND DATA CONTAINED HEREIN IS CONSIDERED PROPRIETARY TO HELICAL PRODUCTS COMPANY, INC., AND SHALL REMAIN THE EXCLUSIVE PROPERTY OF HELICAL. THE HOLDER WILL ASSUME CUSTODY AND CONTROL THAT THIS DOCUMENT WILL NOT BE COPIED, REPRODUCED OR DISCLOSED WITHOUT THE EXPRESS WRITTEN CONSENT OF HELICAL. POSSESSION OF THIS DOCUMENT DOES NOT CONSTITUTE A GRANT TO MANUFACTURE ANY ITEMS.

ADDITIONAL BORE SIZES AVAILABLE UPON REQUEST

APPROVALS	DATE
DRAWN	
CHECKED	
PRODN	
ISSUED	12/21/2011 9: 13: 23 AM

HELICAL PRODUCTS CO.
901 W. McCOY LANE, SANTA MARIA, CA 93455
PHONE (805) 928-3851 FSCI3201

TITLE **HELICAL FLEXIBLE SHAFT COUPLING**

TABULATED BORE SIZES

DWG NO **ACR050**

Printed 12/21/2011 9:14:03 AM by larryg

ADDITION DATE	PART NUMBER	BORE TOLERANCES		TORQUES (lbin)			TORSIONAL FLEXIBILITY	MASS MOMENT OF INERTIA	COMMENTS	A1	A2	
		+.002in -.000in	or +.05mm -.00mm	Non-reversing	Shock or Reversing	Momentary						deg/lbin
	ACR050-3-1.5mm	.094in	1.50mm	4.0	2.0	8.0						
09 Mar 88	ACR050-3-3	.094in	.094in	4.0	2.0	8.0						
21 Sep 89	ACR050-3mm-1.5mm	3.00mm	1.50mm	3.0	1.5	6.0						
12 Jan 05	ACR050-3mm-2mm	3.00mm	2.00mm	3.0	1.5	6.0						
19 Jun 03	ACR050-3mm-3M	3.00mm	.090in	3.0	1.5	6.0						
09 Mar 88	ACR050-3mm-3	3.00mm	.094in	3.0	1.5	6.0						
	ACR050-3mm-3mm	3.00mm	3.00mm	3.0	1.5	6.0						
25 May 88	ACR050-4M-2mm	.120in	2.00mm	3.0	1.5	6.0						
	ACR050-4M-3mm	.120in	3.00mm	3.0	1.5	6.0						
25 May 88	ACR050-4M-4M	.120in	.120in	3.0	1.5	6.0						
09 Mar 88	ACR050-4-1.5mm	.125in	1.50mm	3.0	1.5	6.0						
	ACR050-4-2	.125in	.063in	3.0	1.5	6.0						
09 Mar 88	ACR050-4-2mm	.125in	2.00mm	3.0	1.5	6.0						
09 Mar 88	ACR050-4-2.16mm	.125in	2.16mm	3.0	1.5	6.0						
	ACR050-4-3M	.125in	.090in	3.0	1.5	6.0						
09 Mar 88	ACR050-4-3	.125in	.094in	3.0	1.5	6.0						
09 Mar 88	ACR050-4-2.5mm	.125in	2.50mm	3.0	1.5	6.0						
09 Mar 88	ACR050-4-3mm	.125in	3.00mm	3.0	1.5	6.0						
09 Mar 88	ACR050-4-4M	.125in	.120in	3.0	1.5	6.0						
09 Mar 88	ACR050-4-4	.125in	.125in	3.0	1.5	6.0						
	ACR050-4mm-3mm	* 4.00mm	3.00mm	3.0	1.5	6.0						
09 Mar 88	ACR050-4mm-5	* 4.00mm	* .157in	3.0	1.5	6.0						
09 Mar 88	ACR050-6-3mm	* .188in	3.00mm	3.0	1.5	6.0		Clearance Diam.:		.566in		
25 May 88	ACR050-6-4M	* .188in	.120in	3.0	1.5	6.0		Clearance Diam.:		.566in		
09 Mar 88	ACR050-6-4	* .188in	.125in	3.0	1.5	6.0		Clearance Diam.:		.566in		
	ACR050-5mm-3.16mm	* 5.00mm	3.16mm	3.0	1.5	6.0		Clearance Diam.:		.566in		
	ACR050-5mm-4	* 5.00mm	.125in	3.0	1.5	6.0		Clearance Diam.:		.566in		
25 May 88	ACR050-6mm-3mm	* 6.00mm	3.00mm	3.0	1.5	6.0		Clearance Diam.:		.566in		
10 Apr 07	ACR050-6mm-4	* 6.00mm	.125in	3.0	1.5	6.0		Clearance Diam.:		.566in		
31 Aug 18	ACR050-3-2mm	.094in	2.00mm	4.0	2.0	8.0		Keyway Width:			Error	
19 DEC 18	ACR050-4mm-2mm	*4.00mm	2.00mm	3.0	1.5	6.0						

* NOTE: Bores greater than .125in Dia: bore depth is .190in

NOTICE: THE INFORMATION AND DATA CONTAINED HEREIN IS CONSIDERED PROPRIETARY TO HELICAL PRODUCTS COMPANY, AND SHALL REMAIN THE EXCLUSIVE PROPERTY OF HELICAL. THE HOLDER WILL ASSUME CUSTODY AND CONTROL THAT THIS DOCUMENT WILL NOT BE COPIED, REPRODUCED OR DISCLOSED WITHOUT THE EXPRESS WRITTEN CONSENT OF HELICAL. POSSESSION OF THIS DOCUMENT DOES NOT CONSTITUTE A GRANT TO MANUFACTURE ANY ITEMS.

ADDITIONAL BORE SIZES AVAILABLE UPON REQUEST

APPROVALS	DATE	HELICAL PRODUCTS CO. 901 W. McCOY LANE, SANTA MARIA, CA 93455 PHONE (805) 928-3851 FSCI3201
DRAWN		
CHECKED		TITLE HELICAL FLEXIBLE SHAFT COUPLING
PRODN		TABULATED BORE SIZES
ISSUED	12/21/2011 9:13:23 AM	DWG NO ACR050