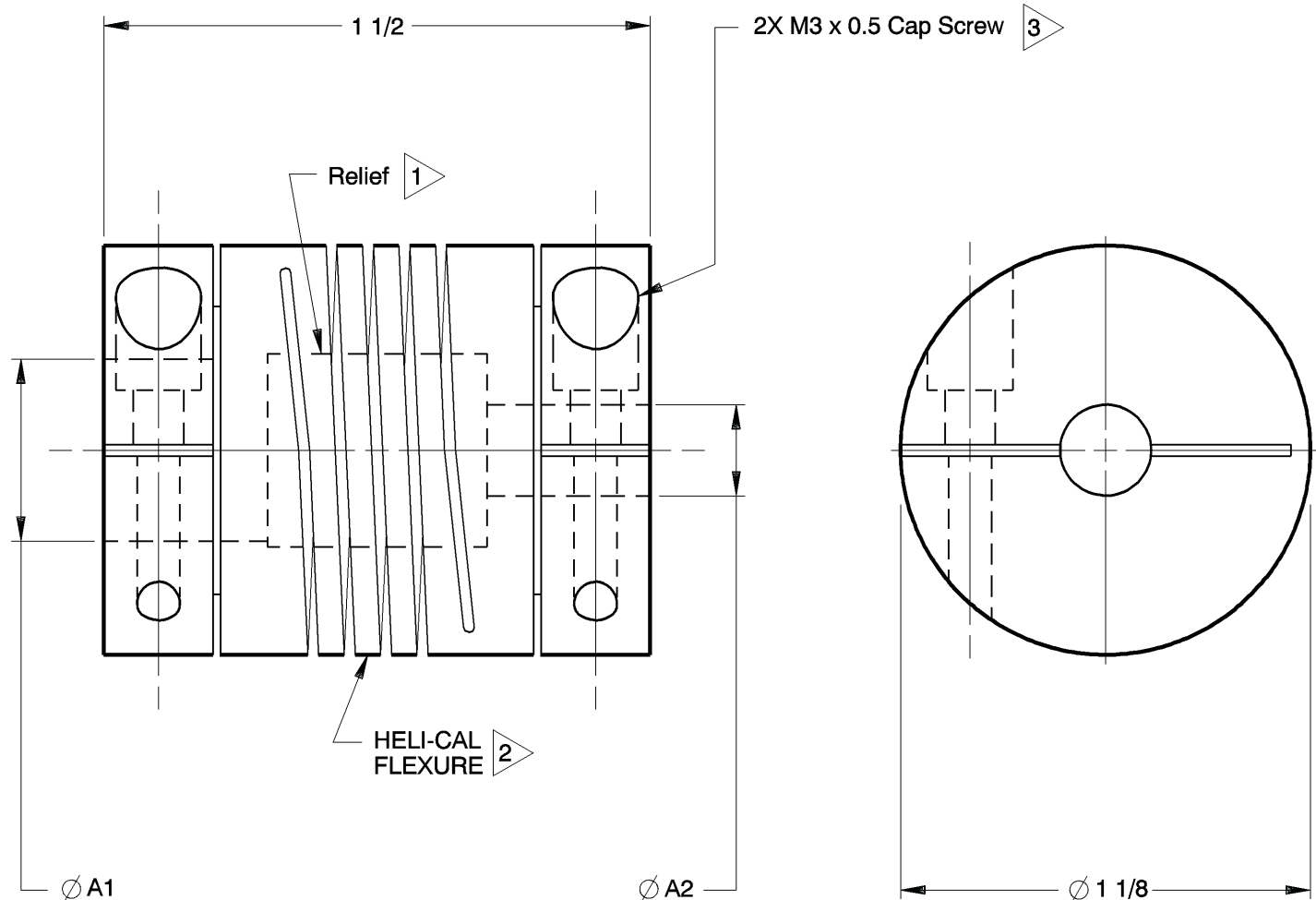


NOTES: See Tabulated Sheet

- 1 Relief permits component shafts to near butt.
- 2 Hubs and HELI-CAL FLEXURE are made from a single piece of material.
- 3 Integral Clamp attachment, hex. socket, ISO std., cap screw furnished: both hubs.
- 4 Backlash: None. No lubrication required.
- 5 Permitted axial motion from free length: ± .010in.
- 6 RPM: Up to 10,000, depending upon application.
- 7 Working torque ratings are based upon continuous duty with noted misalignments applied separately and may be increased with improved alignment:
See Tabulated Sheet
- 8 Permissible shaft misalignment:
Angular, up to 5 degrees.
Offset, up to .010in.
(TIR, .020in.)
- 9 Part will have a 1.257in. Clearance Diameter on both ends when any bore is over .567in. thru .709in.



ACRM112-16-8 SHOWN

NOTICE: THE INFORMATION AND DATA CONTAINED HEREIN IS CONSIDERED PROPRIETARY TO HELICAL PRODUCTS COMPANY, INC., AND SHALL REMAIN THE EXCLUSIVE PROPERTY OF HELICAL. THE HOLDER WILL ASSUME CUSTODY AND CONTROL THAT THIS DOCUMENT WILL NOT BE COPIED, REPRODUCED OR DISCLOSED WITHOUT THE EXPRESS WRITTEN CONSENT OF HELICAL. POSSESSION OF THIS DOCUMENT DOES NOT CONSTITUTE A GRANT TO MANUFACTURE ANY ITEMS.

DO NOT SCALE DRAWING.

12-18-09	---	Finish was Chromic Acid Anodize; Updated GD&T	HG	JAJ	Unless otherwise noted dimensions in inches. Inch Fractions: ± 1/64 Decimals: .XX ± .010 .XXX ± .005 .XXX ± .0010 Metric Decimals: X ± 0.5mm X.X ± 0.25mm X.XX ± 0.15mm Angles: ± 2 degrees Break sharp corners .010 max.	APPROVALS	DATE	<p>HELICAL PRODUCTS CO., INC. P.O. BOX 1069 SANTA MARIA, CA. 93456 U.S.A PHONE (805) 928-3851 FSC13201</p> <p>TITLE HELICAL FLEXIBLE SHAFT COUPLING</p> <p>MATERIAL 7075-T6 Aluminum Alloy</p> <p>FINISH Anodize per HPS1000</p> <p>DWG NO ACRM112</p>
						DRAWN	MM 10-10-79	
CHECKED	MC 10-10-79							
PRODN	APA 10-10-79							
ISSUED								
2-25-99		Clerical format update/ No revision	BJM	MC		WEIGHT	57g (calc)	
DATE	LTR	REVISION	CHK			SCALE	2/1	
						SIZE	A	

ADDITION DATE	PART NUMBER	BORE TOLERANCES		TORQUES (lbin)			TORSIONAL FLEXIBILITY deg/lbin	MASS MOMENT OF INERTIA	COMMENTS	A1	A2	
		+0.002in -0.000in	or	+0.05mm -0.00mm	Non-reversing	Shock or Reversing						Momentary
09 Mar 88	ACRM112-5mm-5mm	5.00mm	5.00mm	32	16	64						
09 Mar 88	ACRM112-6mm-4mm	6.00mm	4.00mm	32	16	64						

*** NOTE: Bores greater than .512in Dia: bore depth is .450in**

NOTICE: THE INFORMATION AND DATA CONTAINED HEREIN IS CONSIDERED PROPRIETARY TO HELICAL PRODUCTS COMPANY, INC., AND SHALL REMAIN THE EXCLUSIVE PROPERTY OF HELICAL. THE HOLDER WILL ASSUME CUSTODY AND CONTROL THAT THIS DOCUMENT WILL NOT BE COPIED, REPRODUCED OR DISCLOSED WITHOUT THE EXPRESS WRITTEN CONSENT OF HELICAL. POSSESSION OF THIS DOCUMENT DOES NOT CONSTITUTE A GRANT TO MANUFACTURE ANY ITEMS.

ADDITIONAL BORE SIZES AVAILABLE UPON REQUEST

APPROVALS	DATE	HELICAL PRODUCTS CO. INC P.O. BOX 1069 SANTA MARIA, CA. 93456 U.S.A PHONE (805) 928-3851 FSCI3201
DRAWN		
CHECKED		TITLE HELICAL FLEXIBLE SHAFT COUPLING
PRODN		TABULATED BORE SIZES
ISSUED	5/16/2012 11:31:28 AM	DWG NO ACRM112

Printed 5/16/2012 11:33:36 AM by Larry G

ADDITION DATE	PART NUMBER	BORE TOLERANCES		TORQUES (lbin)			TORSIONAL FLEXIBILITY deg/lbin	MASS MOMENT OF INERTIA	COMMENTS	A1	A2
		+.002in -.000in	or +.05mm -.00mm	Non-reversing	Shock or Reversing	Momentary					
09 Mar 88	ACRM112-6mm-6mm	6.00mm	6.00mm	32	16	64					
	ACRM112-8-5mm	.250in	5.00mm	32	16	64					
28 Aug 07	ACRM112-8-5.11mm	.250in	5.11mm	32	16	64					
28 Aug 07	ACRM112-8-5.5mm	.250in	5.50mm	32	16	64					
	ACRM112-8-6mm	.250in	6.00mm	32	16	64					
09 Mar 88	ACRM112-8-8	.250in	.250in	32	16	64					
20 Dec 11	ACRM112-6.5mm-3.2mm	6.50mm	3.20mm	32	16	64					
	ACRM112-7mm-7mm	7.00mm	7.00mm	30	15	60					
	ACRM112-7.2mm-6.7mm	7.20mm	6.70mm	28	14	56					
26 Oct 88	ACRM112-7.7mm-6.7mm	7.70mm	6.70mm	28	14	56					
23 Jun 88	ACRM112-10-10	.313in	.313in	28	14	56					
	ACRM112-8mm-5mm	8.00mm	5.00mm	28	14	56					
	ACRM112-8mm-6mm	8.00mm	6.00mm	28	14	56					
09 Mar 88	ACRM112-8mm-8	8.00mm	.250in	28	14	56					
17 Sep 07	ACRM112-8mm-6.5mm	8.00mm	6.50mm	28	14	56					
09 Mar 88	ACRM112-8mm-7mm	8.00mm	7.00mm	28	14	56					
09 Mar 88	ACRM112-8mm-8mm	8.00mm	8.00mm	28	14	56					
20 Dec 11	ACRM112-9mm-8	9.00mm	.250in	25	12	50					
	ACRM112-9mm-9mm	9.00mm	9.00mm	25	12	50					
	ACRM112-9.5mm-9.5mm	9.50mm	9.50mm	24	12	48					
	ACRM112-12-5mm	.375in	5.00mm	24	12	48					
06 Aug 90	ACRM112-12-6mm	.375in	6.00mm	24	12	48					
09 Mar 88	ACRM112-12-8	.375in	.250in	24	12	48					
20 Dec 11	ACRM112-12-7mm	.375in	7.00mm	24	12	48					
	ACRM112-12-7.62mm	.375in	7.62mm	24	12	48					
	ACRM112-12-10	.375in	.313in	24	12	48					
	ACRM112-12-8mm	.375in	8.00mm	24	12	48					
10 May 07	ACRM112-12-9mm	.375in	9.00mm	24	12	48					
08 Aug 89	ACRM112-12-9.5mm	.375in	9.50mm	24	12	48					
09 Mar 88	ACRM112-12-12	.375in	.375in	24	12	48					
21 Jul 89	ACRM112-10mm-6mm	10.00mm	6.00mm	23	11	46					

* NOTE: Bores greater than .512in Dia: bore depth is .450in

NOTICE: THE INFORMATION AND DATA CONTAINED HEREIN IS CONSIDERED PROPRIETARY TO HELICAL PRODUCTS COMPANY, INC., AND SHALL REMAIN THE EXCLUSIVE PROPERTY OF HELICAL. THE HOLDER WILL ASSUME CUSTODY AND CONTROL THAT THIS DOCUMENT WILL NOT BE COPIED, REPRODUCED OR DISCLOSED WITHOUT THE EXPRESS WRITTEN CONSENT OF HELICAL. POSSESSION OF THIS DOCUMENT DOES NOT CONSTITUTE A GRANT TO MANUFACTURE ANY ITEMS.

ADDITIONAL BORE SIZES AVAILABLE UPON REQUEST

APPROVALS	DATE	HELICAL PRODUCTS CO. INC P.O. BOX 1069 SANTA MARIA, CA. 93456 U.S.A PHONE (805) 928-3851/FSCI3201
DRAWN		
CHECKED		TITLE
PRODN		HELICAL FLEXIBLE SHAFT COUPLING
ISSUED	5/16/2012 11:31:28 AM	TABULATED BORE SIZES
		DWG NO ACRM112

Printed 5/16/2012 11:33:36 AM by larryng

ADDITION DATE	PART NUMBER	BORE TOLERANCES		TORQUES (lbin)			TORSIONAL FLEXIBILITY	MASS MOMENT OF INERTIA	COMMENTS	A1	A2	
		+.002in -.000in	or +.05mm -.00mm	Non-reversing	Shock or Reversing	Momentary						deg/lbin
03 Apr 90	ACRM112-10mm-8	10.00mm	.250in	23	11	46						
21 Jul 89	ACRM112-10mm-7mm	10.00mm	7.00mm	23	11	46						
	ACRM112-10mm-9	10.00mm	.282in	23	11	46						
09 Mar 88	ACRM112-10mm-8mm	10.00mm	8.00mm	23	11	46						
27 May 03	ACRM112-10mm-9.5mm	10.00mm	9.50mm	23	12	46						
09 Mar 88	ACRM112-10mm-12	10.00mm	.375in	23	11	46						
09 Mar 88	ACRM112-10mm-10mm	10.00mm	10.00mm	23	11	46						
16 Jun 00	ACRM112-10mm-12mm Superseded	10.00mm	12.00mm	23	11	46						
	ACRM112-11mm-4	11.00mm	.125in	22	11	44						
	ACRM112-11mm-5mm	11.00mm	5.00mm	22	11	44						
20 Jan 05	ACRM112-11mm-7mm	11.00mm	7.00mm	22	11	44						
	ACRM112-11mm-8mm	11.00mm	8.00mm	22	11	44						
09 Mar 88	ACRM112-11mm-10mm	11.00mm	10.00mm	22	11	44						
09 Mar 88	ACRM112-11mm-11mm	11.00mm	11.00mm	22	11	44						
09 Mar 88	ACRM112-11.58mm-10mm	11.58mm	10.00mm	21	10	42						
09 Mar 88	ACRM112-11.6mm-6mm	11.60mm	6.00mm	21	10	42						
09 Mar 88	ACRM112-11.6mm-9mm	11.60mm	9.00mm	21	10	42						
09 Mar 88	ACRM112-11.6mm-11.6mm	11.60mm	11.60mm	21	10	42						
	ACRM112-12mm-3mm	12.00mm	3.00mm	21	10	42						
23 Jun 88	ACRM112-12mm-6	12.00mm	.188in	21	10	42						
23 Jun 88	ACRM112-12mm-5mm	12.00mm	5.00mm	21	10	42						
23 Jun 88	ACRM112-12mm-6mm	12.00mm	6.00mm	21	10	42						
	ACRM112-12mm-8	12.00mm	.250in	21	10	42						
23 Jun 88	ACRM112-12mm-7mm	12.00mm	7.00mm	21	10	42						
23 Jun 88	ACRM112-12mm-8mm	12.00mm	8.00mm	21	10	42						
09 Mar 88	ACRM112-12mm-9mm	12.00mm	9.00mm	21	10	42						
09 Mar 88	ACRM112-12mm-12	12.00mm	.375in	21	10	42						
09 Mar 88	ACRM112-12mm-10mm	12.00mm	10.00mm	21	10	42						
09 Mar 88	ACRM112-12mm-11mm	12.00mm	11.00mm	21	10	42						
	ACRM112-12mm-11.6mm	12.00mm	11.60mm	21	10	42						
09 Mar 88	ACRM112-12mm-12mm	12.00mm	12.00mm	21	10	42						

* NOTE: Bores greater than .512in Dia: bore depth is .450in

NOTICE: THE INFORMATION AND DATA CONTAINED HEREIN IS CONSIDERED PROPRIETARY TO HELICAL PRODUCTS COMPANY, INC., AND SHALL REMAIN THE EXCLUSIVE PROPERTY OF HELICAL. THE HOLDER WILL ASSUME CUSTODY AND CONTROL THAT THIS DOCUMENT WILL NOT BE COPIED, REPRODUCED OR DISCLOSED WITHOUT THE EXPRESS WRITTEN CONSENT OF HELICAL. POSSESSION OF THIS DOCUMENT DOES NOT CONSTITUTE A GRANT TO MANUFACTURE ANY ITEMS.

ADDITIONAL BORE SIZES AVAILABLE UPON REQUEST

APPROVALS	DATE	HELICAL PRODUCTS CO. INC P.O. BOX 1069 SANTA MARIA, CA. 93456 U.S.A PHONE (805) 928-3851 FSCI3201
DRAWN		
CHECKED		TITLE
PRODN		HELICAL FLEXIBLE SHAFT COUPLING
ISSUED	5/16/2012 11:31:28 AM	DWG NO TABULATED BORE SIZES ACRM112

Printed 5/16/2012 11:33:36 AM by larryg

ADDITION DATE	PART NUMBER	BORE TOLERANCES		TORQUES (lbin)			TORSIONAL FLEXIBILITY	MASS MOMENT OF INERTIA	COMMENTS	A1	A2	
		+.002in -.000in	or +.05mm -.00mm	Non-reversing	Shock or Reversing	Momentary						deg/lbin
20 Dec 11	ACRM112-16-6mm	.500in	6.00mm	20	10	40						
09 Mar 88	ACRM112-16-8	.500in	.250in	20	10	40						
20 Dec 11	ACRM112-16-7mm	.500in	7.00mm	20	10	40						
	ACRM112-16-10	.500in	.313in	20	10	40						
01 Mar 07	ACRM112-16-8mm	.500in	8.00mm	20	10	40						
20 Dec 11	ACRM112-16-9mm	.500in	9.00mm	20	10	40						
09 Mar 88	ACRM112-16-12	.500in	.375in	20	10	40						
01 Mar 07	ACRM112-16-10mm	.500in	10.00mm	20	10	40						
09 Mar 88	ACRM112-16-11.58mm	.500in	11.58mm	20	10	40						
02 Nov 88	ACRM112-16-12mm	.500in	12.00mm	20	10	40						
09 Mar 88	ACRM112-16-16	.500in	.500in	20	10	40						
	ACRM112-12.8mm-12mm	12.80mm	12.00mm	20	10	40						
	ACRM112-12.8mm-12.8mm	12.80mm	12.80mm	20	10	40						
14 May 09	ACRM112-13mm-4.5mm	13.00mm	4.50mm	20	10	40						
	ACRM112-13mm-8mm	13.00mm	8.00mm	20	10	40						
	ACRM112-13mm-12	13.00mm	.375in	20	10	40						
16 May 12	ACRM112-13mm-10mm	13.00mm	10.00mm	20	10	40						
27 Sep 02	ACRM112-13mm-12mm	13.00mm	12.00mm	20	10	40						
	ACRM112-13mm-13mm	13.00mm	13.00mm	20	10	40						
	ACRM112-13.34mm-8	*13.34mm	.250in	20	10	40						
29 Sep 04	ACRM112-14mm-6mm	*14.00mm	6.00mm	20	10	40		Clearance Diam.:		1.257in		
01 Nov 88	ACRM112-14mm-10mm	*14.00mm	10.00mm	20	10	40		Clearance Diam.:		1.257in		
	ACRM112-14mm-12mm	*14.00mm	12.00mm	20	10	40		Clearance Diam.:		1.257in		
	ACRM112-15mm-10mm	*15.00mm	10.00mm	20	10	40		Clearance Diam.:		1.257in		
14 Mar 90	ACRM112-15mm-12mm	*15.00mm	12.00mm	20	10	40		Clearance Diam.:		1.257in		
11 May 89	ACRM112-16mm-10mm	*16.00mm	10.00mm	20	10	40		Clearance Diam.:		1.257in		
14 Apr 00	ACRM112-16mm-12mm	*16.00mm	12.00mm	20	10	40		Clearance Diam.:		1.257in		
20 JAN 14	ACRM112-11mm-12	11.00mm	.375in	22	11	44						
19 SEP 15	ACRM112-10-8	.313in	.250in	28	14	56						

* NOTE: Bores greater than .512in Dia: bore depth is .450in

NOTICE: THE INFORMATION AND DATA CONTAINED HEREIN IS CONSIDERED PROPRIETARY TO HELICAL PRODUCTS COMPANY, INC., AND SHALL REMAIN THE EXCLUSIVE PROPERTY OF HELICAL. THE HOLDER WILL ASSUME CUSTODY AND CONTROL THAT THIS DOCUMENT WILL NOT BE COPIED, REPRODUCED OR DISCLOSED WITHOUT THE EXPRESS WRITTEN CONSENT OF HELICAL. POSSESSION OF THIS DOCUMENT DOES NOT CONSTITUTE A GRANT TO MANUFACTURE ANY ITEMS.

ADDITIONAL BORE SIZES AVAILABLE UPON REQUEST

APPROVALS	DATE	HELICAL PRODUCTS CO. INC	
DRAWN		P.O. BOX 1069 SANTA MARIA, CA. 93456 U.S.A PHONE (805) 928-3851/FSCI3201	
CHECKED		TITLE	HELICAL FLEXIBLE SHAFT COUPLING
PRODN		TABULATED BORE SIZES	
ISSUED	5/16/2012 11:31:28 AM	DWG NO	ACRM112

Printed 5/16/2012 11:33:36 AM by larryyg