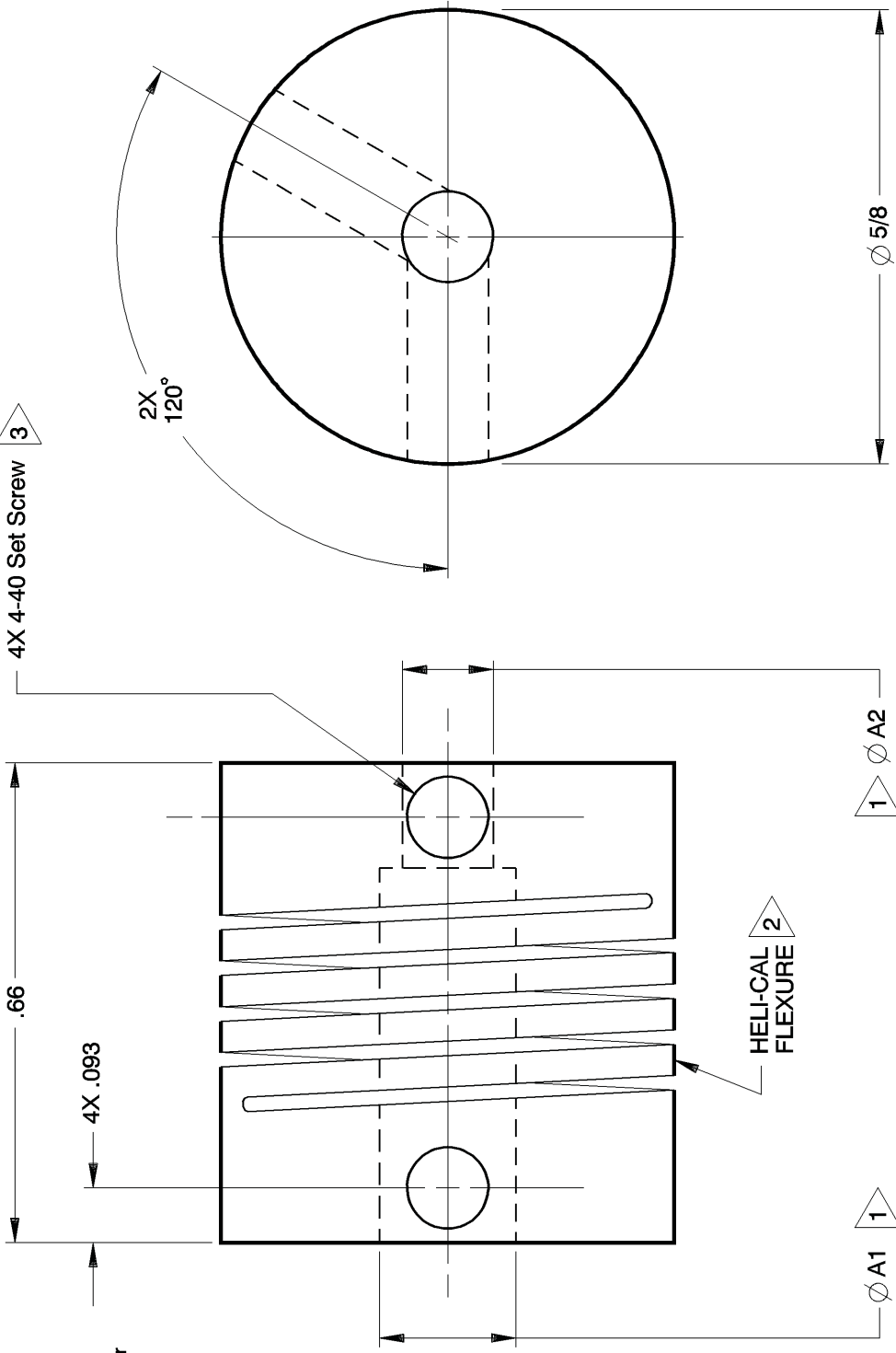


NOTES: See Tabulated Sheet



- 1 Straight thru bore. Shafts must not enter flexure area during operation.* Maximum shaft penetrations: .182in. Minimum shaft end to shaft end: .296in. *A2 shaft may enter flexure area if smaller than opposing bore; data available.
- 2 Hubs and HELI-CAL FLEXURE are made from a single piece of material.
- 3 Set Screw attachment, hex. socket, cup point set screw furnished: both hubs. Set Screw size based on bore size: .078in thru .093in : 1-72 .094in thru .124in : 2-56 .125in thru .375in : 4-40
- 4 Backlash: None. No lubrication required.
- 5 Permitted axial motion from free length: ± .010in.
- 6 RPM: Up to 10,000, depending upon application.
- 7 Working torque ratings are based upon continuous duty with noted misalignments applied separately and may be increased with improved alignment: See Tabulated Sheet
- 8 Permissible shaft misalignment: Angular, up to 5 degrees. Offset, up to .010in. (TIR, .020in.)

AE062-6-4 SHOWN

<p>NOTICE: THE INFORMATION AND DATA CONTAINED HEREIN IS CONSIDERED PROPRIETARY TO HELICAL PRODUCTS COMPANY, INC., AND SHALL REMAIN THE EXCLUSIVE PROPERTY OF HELICAL. THE HOLDER WILL ASSUME CUSTODY AND CONTROL THAT THIS DOCUMENT WILL NOT BE COPIED, REPRODUCED OR DISCLOSED WITHOUT THE EXPRESS WRITTEN CONSENT OF HELICAL. POSSESSION OF THIS DOCUMENT DOES NOT CONSTITUTE A GRANT TO MANUFACTURE ANY ITEMS.</p> <p>DO NOT SCALE DRAWING.</p>		<p>APPROVALS</p> <p>DRAWN MM DATE 12-17-79</p> <p>CHECKED MC DATE 12-17-79</p> <p>PRODN APA DATE 12-17-79</p> <p>ISSUED</p> <p>WEIGHT 8g (calc)</p> <p>SCALE 4/1 SIZE A</p>	<p>TITLE HELICAL FLEXIBLE SHAFT COUPLING</p> <p>MATERIAL 7075-T6 Aluminum Alloy</p> <p>FINISH Anodize per HPS1000</p> <p>DWG NO AE062</p>
<p>12-18-09</p> <p>10-8-98</p>	<p>---</p> <p>No revision</p>	<p>REVISION</p> <p>DATE</p>	<p>HELICAL PRODUCTS CO., INC.</p> <p>P.O. BOX 1069 SANTA MARIA, CA. 93456 U.S.A</p> <p>PHONE (805) 928-3851 FSC13201</p>
<p>12-18-09</p> <p>10-8-98</p>	<p>Finish was Chromic Acid Anodize; Updated GD&T</p> <p>Clerical format update/</p>	<p>REVISION</p> <p>DATE</p>	<p>HELICAL FLEXIBLE SHAFT COUPLING</p> <p>7075-T6 Aluminum Alloy</p> <p>Anodize per HPS1000</p> <p>AE062</p>
<p>12-18-09</p> <p>10-8-98</p>	<p>---</p> <p>No revision</p>	<p>REVISION</p> <p>DATE</p>	<p>HELICAL FLEXIBLE SHAFT COUPLING</p> <p>7075-T6 Aluminum Alloy</p> <p>Anodize per HPS1000</p> <p>AE062</p>

ADDITION DATE	PART NUMBER	BORE TOLERANCES		TORQUES (lbin)			TORSIONAL FLEXIBILITY	MASS MOMENT OF INERTIA	COMMENTS	
		+002in -000in	+05mm -00mm	Non-reversing	Shock or Reversing	Momentary				
							A1 Dia	A2 Dia	deg/lbin	
09 Mar 88	AE062-3-3	.094in	.094in	8	4	16			A1	A2
09 Mar 88	AE062-4M-4M	.120in	.120in	7	3	14				
09 Mar 88	AE062-4-3	.125in	.094in	7	3	14				
09 Mar 88	AE062-4-4	.125in	.125in	7	3	14				
09 Mar 88	AE062-5-3	.157in	.094in	6	3	12				
09 Mar 88	AE062-5-4	.157in	.125in	6	3	12				
09 Mar 88	AE062-5-5	.157in	.157in	6	3	12				
09 Mar 88	AE062-6-2mm	.188in	2.00mm	5.0	2.5	10.0				
09 Mar 88	AE062-6-3	.188in	.094in	5.0	2.5	10.0				
09 Mar 88	AE062-6-2.5mm	.188in	2.50mm	5.0	2.5	10.0				
09 Mar 88	AE062-6-3mm	.188in	3.00mm	5.0	2.5	10.0				
09 Mar 88	AE062-6-4M	.188in	.120in	5.0	2.5	10.0				
09 Mar 88	AE062-6-4	.188in	.125in	5.0	2.5	10.0				
07 Feb 01	AE062-6-3.51mm	.188in	3.51mm	5.0	2.5	10.0				
09 Mar 88	AE062-6-5	.188in	.157in	5.0	2.5	10.0				
09 Mar 88	AE062-6-6	.188in	.188in	5.0	2.5	10.0				
09 Mar 88	AE062-5mm-3mm	5.00mm	3.00mm	5.0	2.5	10.0				
24 Jun 88	AE062-5mm-4	5.00mm	.125in	5.0	2.5	10.0				
24 Jun 88	AE062-5mm-5mm	5.00mm	5.00mm	5.0	2.5	10.0				
26 Oct 88	AE062-5.5mm-4mm	* 5.50mm	4.00mm	5.0	2.5	10.0				
	AE062-6mm-2mm	* 6.00mm	2.00mm	5.0	2.5	10.0				
24 Jun 88	AE062-6mm-4mm	* 6.00mm	4.00mm	5.0	2.5	10.0				
24 Jun 88	AE062-6mm-6	* 6.00mm	.188in	5.0	2.5	10.0				
24 Jun 88	AE062-6mm-6mm	* 6.00mm	* 6.00mm	5.0	2.5	10.0				
09 Mar 88	AE062-8-3mm	* .250in	3.00mm	5.0	2.5	10.0				
09 Mar 88	AE062-8-4	* .250in	.125in	5.0	2.5	10.0				
31 May 00	AE062-8-4mm	* .250in	4.00mm	5.0	2.5	10.0				
09 Mar 88	AE062-8-6	* .250in	.188in	5.0	2.5	10.0				
09 Mar 88	AE062-8-5mm	* .250in	5.00mm	5.0	2.5	10.0				
12 Jun 03	AE062-8-6mm	* .250in	* 6.00mm	5.0	2.5	10.0				
09 Mar 88	AE062-8-8	* .250in	* .250in	5.0	2.5	10.0				

*** NOTE: Bores greater than .197in Dia: bore depth is .160in**

HEXAGONAL PRODUCTS CO., INC
P.O. BOX 1069 SANTA MARIA, CA. 93456 U.S.A
PHONE (805) 928-3851/FSCI3201

APPROVALS	DATE
DRAWN	
CHECKED	
PRODN	
ISSUED	12/10/2009 11:02:38 AM

NOTICE: THE INFORMATION AND DATA CONTAINED HEREIN IS CONSIDERED PROPRIETARY TO HELICAL PRODUCTS COMPANY, INC., AND SHALL REMAIN THE EXCLUSIVE PROPERTY OF HELICAL. THE HOLDER WILL ASSUME CUSTODY AND CONTROL THAT THIS DOCUMENT WILL NOT BE COPIED, REPRODUCED OR DISCLOSED WITHOUT THE EXPRESS WRITTEN CONSENT OF HELICAL. POSSESSION OF THIS DOCUMENT DOES NOT CONSTITUTE A GRANT TO MANUFACTURE ANY ITEMS.

ADDITIONAL BORE SIZES AVAILABLE UPON REQUEST

HELICAL FLEXIBLE SHAFT COUPLING
TABULATED BORE SIZES

ADDITION DATE	PART NUMBER	BORE TOLERANCES		TORQUES (lbin)			TORSIONAL FLEXIBILITY	MASS MOMENT OF INERTIA	COMMENTS
		+002in -000in	+05mm -00mm	Non-reversing	Shock or Reversing	Momentary			
09 Dec 88	AE062-6.5mm-4mm	* .50mm	4.00mm	5.0	2.5	10.0			A1 A2
09 Mar 88	AE062-9-4M	* .282in	.120in	5.0	2.5	10.0			
09 Mar 88	AE062-7.26mm-4	* 7.26mm	.125in	5.0	2.5	10.0			
	AE062-10-6	* .313in	.188in	5.0	2.5	10.0			
09 Mar 88	AE062-10-8	* .313in	* .250in	5.0	2.5	10.0			
26 Oct 88	AE062-8mm-8	* 8.00mm	* .250in	5.0	2.5	10.0			
09 Mar 88	AE062-12-4M	* .375in	.120in	5.0	2.5	10.0			
26 Oct 88	AE062-12-4	* .375in	.125in	5.0	2.5	10.0			
	AE062-12-6	* .375in	.188in	5.0	2.5	10.0			
09 Mar 88	AE062-12-8	* .375in	* .250in	5.0	2.5	10.0			
09 Mar 88	AE062-12-7mm	* .375in	* 7.00mm	5.0	2.5	10.0			
09 Mar 88	AE062-12-12	* .375in	* .375in	5.0	2.5	10.0			
20 Mar 15	AE062-12-3mm	* .375in	3.00mm	5.0	2.5	10.0			

* NOTE: Bores greater than .197in Dia: bore depth is .160in

NOTICE: THE INFORMATION AND DATA CONTAINED HEREIN IS CONSIDERED PROPRIETARY TO HELICAL PRODUCTS COMPANY, INC., AND SHALL REMAIN THE EXCLUSIVE PROPERTY OF HELICAL. THE HOLDER WILL ASSUME CUSTODY AND CONTROL THAT THIS DOCUMENT WILL NOT BE COPIED, REPRODUCED OR DISCLOSED WITHOUT THE EXPRESS WRITTEN CONSENT OF HELICAL. POSSESSION OF THIS DOCUMENT DOES NOT CONSTITUTE A GRANT TO MANUFACTURE ANY ITEMS.

ADDITIONAL BORE SIZES AVAILABLE UPON REQUEST

APPROVALS	DATE	HELICAL PRODUCTS CO. INC
DRAWN		P.O. BOX 1069 SANTA MARIA, CA. 93456 U.S.A
CHECKED		PHONE (805) 928-3851/FSCI3201
PRODN		TITLE HELICAL FLEXIBLE SHAFT COUPLING
ISSUED	12/10/2009 11:02:38 AM	TABULATED BORE SIZES
		DWG NO AE062