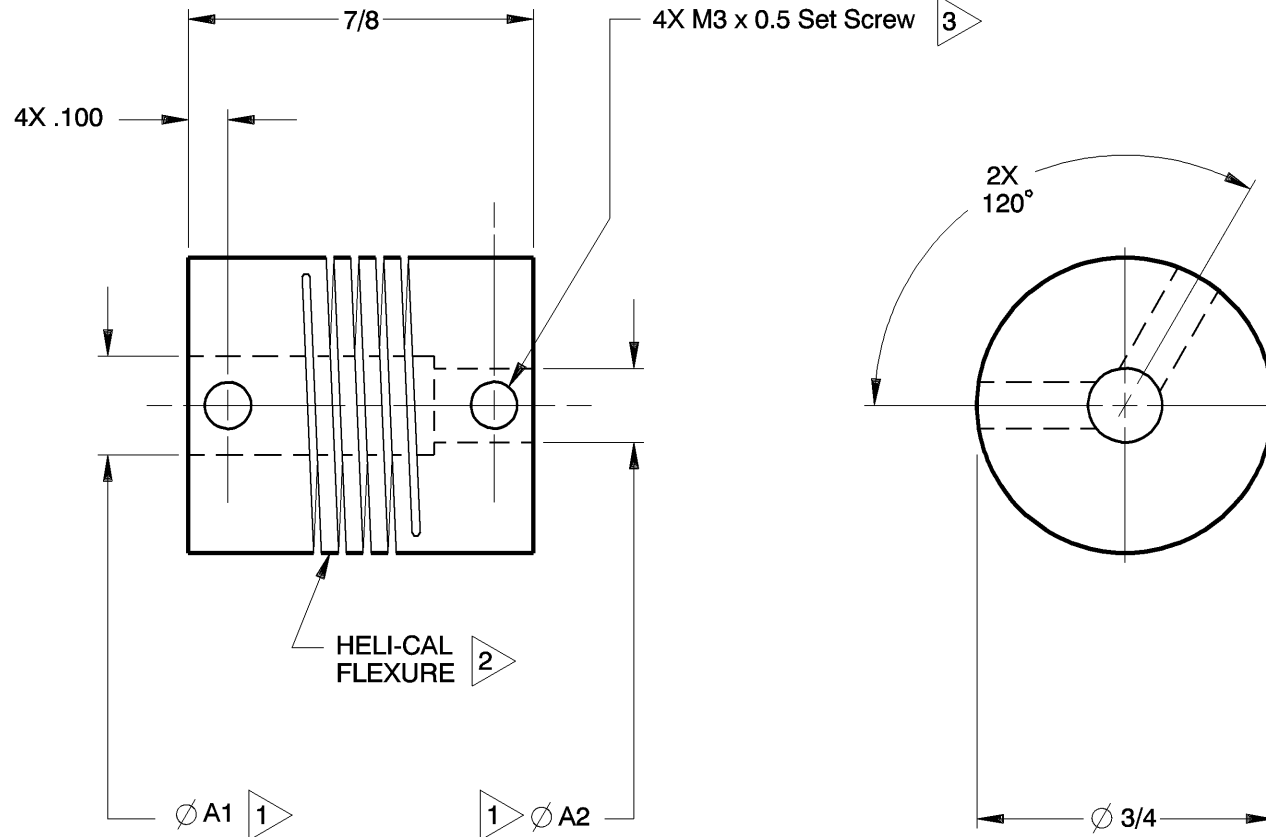


NOTES: See Tabulated Sheet

- 1 Straight thru bore. Shafts must not enter flexure area during operation.*
Maximum shaft penetrations: .250in.
Minimum shaft end to shaft end: .375in.
*A2 shaft may enter flexure area if smaller than opposing bore; data available.
- 2 Hubs and HELI-CAL FLEXURE are made from a single piece of material.
- 3 Set Screw attachment, hex socket, ISO std., cup point set screw furnished: both hubs.
Set Screw size based on bore size:
.094in thru .124in : M2x0.4
.125in thru .512in : M3x0.5
- 4 Backlash: None.
No lubrication required.
- 5 Permitted axial motion from free length: ± .010in.
- 6 RPM: Up to 10,000, depending upon application.
- 7 Working torque ratings are based upon continuous duty with noted misalignments applied separately and may be increased with improved alignment:
See Tabulated Sheet
- 8 Permissible shaft misalignment:
Angular, up to 5 degrees.
Offset, up to .010in.
(TIR, .020in.)



AEM075-8-6 SHOWN

NOTICE: THE INFORMATION AND DATA CONTAINED HEREIN IS CONSIDERED PROPRIETARY TO HELICAL PRODUCTS COMPANY, INC., AND SHALL REMAIN THE EXCLUSIVE PROPERTY OF HELICAL. THE HOLDER WILL ASSUME CUSTODY AND CONTROL THAT THIS DOCUMENT WILL NOT BE COPIED, REPRODUCED OR DISCLOSED WITHOUT THE EXPRESS WRITTEN CONSENT OF HELICAL. POSSESSION OF THIS DOCUMENT DOES NOT CONSTITUTE A GRANT TO MANUFACTURE ANY ITEMS.

DO NOT SCALE DRAWING.

12-18-09	---	Finish was Chromic Acid Anodize; Updated GD&T	HG	JAJ
10-8-98		Clerical format update/ No revision	BJM	MC
DATE	LTR	REVISION	CHK	

Unless otherwise noted dimensions in inches.

Tolerances are:
Fractions: ± 1/64
Decimals: .XX ± .010
.XXX ± .005
.XXXX ± .0010
Angles: ± 2 degrees
Break sharp corners .010 max.

APPROVALS	DATE
DRAWN MM	1-15-79
CHECKED GLB	1-15-79
PRODN APA	1-15-79
ISSUED	
WEIGHT	14g (calc)
SCALE 2/1	SIZE A

HELICAL PRODUCTS CO., INC. P.O. BOX 1069 SANTA MARIA, CA. 93456 U.S.A PHONE (805) 928-3851 FSC13201			
		TITLE	HELICAL FLEXIBLE SHAFT COUPLING
		MATERIAL	7075-T6 Aluminum Alloy
FINISH	Anodize per HPS1000		
DWG NO	AEM075		

ADDITION DATE	PART NUMBER	BORE TOLERANCES		TORQUES (lbin)			TORSIONAL FLEXIBILITY deg/lbin	MASS MOMENT OF INERTIA	COMMENTS	A1	A2
		+.002in -.000in	or +.05mm -.00mm	Non-reversing	Shock or Reversing	Momentary					
09 Mar 88	AEM075-3mm-3mm	3.00mm	3.00mm	12	6	24					
09 Mar 88	AEM075-4-4	.125in	.125in	12	6	24					
09 Mar 88	AEM075-4mm-4mm	4.00mm	4.00mm	11	5	22					
09 Mar 88	AEM075-6-6	.188in	.188in	10	5	20					
09 Mar 88	AEM075-5mm-3mm	5.00mm	3.00mm	10	5	20					
09 Mar 88	AEM075-5mm-5mm	5.00mm	5.00mm	10	5	20					
09 Mar 88	AEM075-6mm-3mm	6.00mm	3.00mm	9	4	18					
09 Mar 88	AEM075-6mm-4mm	6.00mm	4.00mm	9	4	18					
09 Mar 88	AEM075-6mm-5mm	6.00mm	5.00mm	9	4	18					
09 Mar 88	AEM075-6mm-6mm	6.00mm	6.00mm	9	4	18					
09 Mar 88	AEM075-8-3.6mm	.250in	3.60mm	9	4	18					
	AEM075-8-5	.250in	.157in	9	4	18					
09 Mar 88	AEM075-8-6	.250in	.188in	9	4	18					
09 Mar 88	AEM075-8-6mm	.250in	6.00mm	9	4	18					
09 Mar 88	AEM075-8-8	.250in	.250in	9	4	18					
09 Mar 88	AEM075-7mm-7mm	* 7.00mm	* 7.00mm	9	4	18					
	AEM075-8mm-6mm	* 8.00mm	6.00mm	9	4	18					
09 Mar 88	AEM075-8mm-8	* 8.00mm	.250in	9	4	18					
09 Mar 88	AEM075-8mm-8mm	* 8.00mm	* 8.00mm	9	4	18					
19 Jun 00	AEM075-12-12	* .375in	* .375in	9	4	18					
09 Mar 88	AEM075-10mm-5mm	*10.00mm	5.00mm	9	4	18					
09 Mar 88	AEM075-10mm-6mm	*10.00mm	6.00mm	9	4	18					
	AEM075-10mm-10mm	*10.00mm	*10.00mm	9	4	18					
23 May 03	AEM075-12mm-12mm	*12.00mm	*12.00mm	9	4	18					

* NOTE: Bores greater than .250in Dia: bore depth is .255in

NOTICE: THE INFORMATION AND DATA CONTAINED HEREIN IS CONSIDERED PROPRIETARY TO HELICAL PRODUCTS COMPANY, INC., AND SHALL REMAIN THE EXCLUSIVE PROPERTY OF HELICAL. THE HOLDER WILL ASSUME CUSTODY AND CONTROL THAT THIS DOCUMENT WILL NOT BE COPIED, REPRODUCED OR DISCLOSED WITHOUT THE EXPRESS WRITTEN CONSENT OF HELICAL. POSSESSION OF THIS DOCUMENT DOES NOT CONSTITUTE A GRANT TO MANUFACTURE ANY ITEMS.

ADDITIONAL BORE SIZES AVAILABLE UPON REQUEST

APPROVALS

DATE

DRAWN

CHECKED

PRODN

ISSUED

12/16/2009
7: 50: 24 AM

HELICAL PRODUCTS CO. INC

P.O. BOX 1069 SANTA MARIA, CA. 93456 U.S.A
PHONE (805) 928-3851 FSCI3201

TITLE HELICAL FLEXIBLE SHAFT COUPLING

TABULATED BORE SIZES

DWG NO

AEM075

Printed 12/16/2009 7: 50: 34 AM by larrys