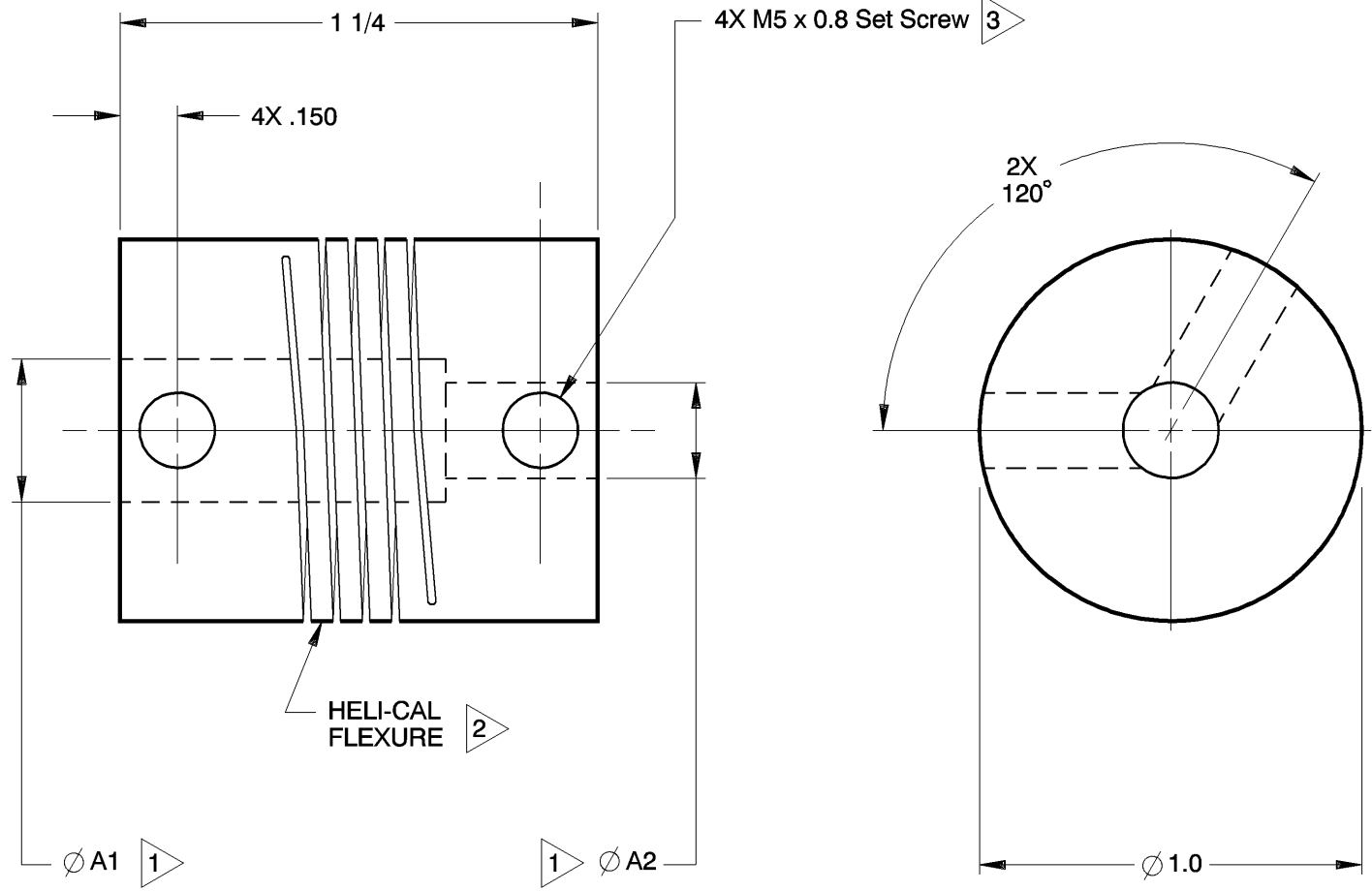


NOTES: See Tabulated Sheet

- 1 Straight thru bore. Shafts must not enter flexure area during operation.*
Maximum shaft penetrations: .400in.
Minimum shaft end to shaft end: .450in.
*A2 shaft may enter flexure area if smaller than opposing bore; data available.
- 2 Hubs and HELI-CAL FLEXURE are made from a single piece of material.
- 3 Set Screw attachment, hex socket, ISO std., cup point set screw furnished: both hubs.
Set Screw size based on bore size:
.094in thru .187in : M2x0.4
.188in thru .235in : M4x0.7
.236in thru .630in : M5x0.8
- 4 Backlash: None.
No lubrication required.
- 5 Permitted axial motion from free length: ± .010in.
- 6 RPM: Up to 10,000, depending upon application.
- 7 Working torque ratings are based upon continuous duty with noted misalignments applied separately and may be increased with improved alignment:
See Tabulated Sheet
- 8 Permissible shaft misalignment:
Angular, up to 5 degrees.
Offset, up to .010in.
(TIR, .020in.)



AEM100-12-8 SHOWN

NOTICE: THE INFORMATION AND DATA CONTAINED HEREIN IS CONSIDERED PROPRIETARY TO HELICAL PRODUCTS COMPANY, INC., AND SHALL REMAIN THE EXCLUSIVE PROPERTY OF HELICAL. THE HOLDER WILL ASSUME CUSTODY AND CONTROL THAT THIS DOCUMENT WILL NOT BE COPIED, REPRODUCED OR DISCLOSED WITHOUT THE EXPRESS WRITTEN CONSENT OF HELICAL. POSSESSION OF THIS DOCUMENT DOES NOT CONSTITUTE A GRANT TO MANUFACTURE ANY ITEMS.

DO NOT SCALE DRAWING.

| | | | | |
|----------|-----|---|-----|-----|
| 12-18-09 | --- | Finish was Chromic Acid Anodize; Updated GD&T | JAJ | HG |
| 10-8-98 | | Clerical format update/ No revision | BJM | |
| DATE | LTR | REVISION | | CHK |

Unless otherwise noted dimensions in inches.

Tolerances are:
Fractions: ± 1/64
Decimals: .XX ± .010
.XXX ± .005
.XXXX ± .0010
Angles: ± 2 degrees
Break sharp corners .010 max.

| | |
|------------|------------|
| APPROVALS | DATE |
| DRAWN MM | 9-17-79 |
| CHECKED MC | 9-17-79 |
| PRODN APA | 9-17-79 |
| ISSUED | |
| WEIGHT | 39g (calc) |
| SCALE 2/1 | SIZE A |

| | |
|---|------------------------|
| <p>HELICAL PRODUCTS CO., INC. P.O. BOX 1069 SANTA MARIA, CA. 93456 U.S.A PHONE (805) 928-3851 FSC13201</p> | |
| | |
| MATERIAL | 7075-T6 Aluminum Alloy |
| FINISH | Anodize per HPS1000 |
| DWG NO | AEM100 |

| ADDITION DATE | PART NUMBER | BORE TOLERANCES | | TORQUES (lbin) | | | TORSIONAL FLEXIBILITY deg/lbin | MASS MOMENT OF INERTIA | COMMENTS | A1 | A2 |
|---------------|------------------|--------------------|------------------------|----------------|--------------------|-----------|--------------------------------|------------------------|----------|----|----|
| | | +.002in -.000in | or +.05mm -.00mm | Non-reversing | Shock or Reversing | Momentary | | | | | |
| | | | | | | | | | | | |
| | AEM100-5mm-5mm | 5.00mm | 5.00mm | 18 | 9 | 36 | | | | | |
| | AEM100-6mm-4mm | 6.00mm | 4.00mm | 18 | 9 | 36 | | | | | |
| | AEM100-6mm-5mm | 6.00mm | 5.00mm | 18 | 9 | 36 | | | | | |
| 09 Mar 88 | AEM100-6mm-6mm | 6.00mm | 6.00mm | 18 | 9 | 36 | | | | | |
| 09 Mar 88 | AEM100-8-8 | .250in | .250in | 18 | 9 | 36 | | | | | |
| 09 Mar 88 | AEM100-10-8 | .313in | .250in | 16 | 8 | 32 | | | | | |
| 09 Mar 88 | AEM100-8mm-5mm | 8.00mm | 5.00mm | 16 | 8 | 32 | | | | | |
| 09 Mar 88 | AEM100-8mm-6mm | 8.00mm | 6.00mm | 16 | 8 | 32 | | | | | |
| | AEM100-8mm-8 | 8.00mm | .250in | 16 | 8 | 32 | | | | | |
| 09 Mar 88 | AEM100-8mm-8mm | 8.00mm | 8.00mm | 16 | 8 | 32 | | | | | |
| | AEM100-9mm-9mm | 9.00mm | 9.00mm | 14 | 7 | 29 | | | | | |
| | AEM100-12-8 | .375in | .250in | 14 | 7 | 28 | | | | | |
| | AEM100-12-8mm | .375in | 8.00mm | 14 | 7 | 28 | | | | | |
| 09 Mar 88 | AEM100-12-12 | .375in | .375in | 14 | 7 | 28 | | | | | |
| 05 Jun 90 | AEM100-10mm-5mm | *10.00mm | 5.00mm | 14 | 7 | 28 | | | | | |
| 24 Jun 88 | AEM100-10mm-6mm | *10.00mm | 6.00mm | 14 | 7 | 28 | | | | | |
| 06 Aug 90 | AEM100-10mm-8 | *10.00mm | .250in | 14 | 7 | 28 | | | | | |
| 15 Nov 88 | AEM100-10mm-7mm | *10.00mm | 7.00mm | 14 | 7 | 28 | | | | | |
| 15 Nov 88 | AEM100-10mm-8mm | *10.00mm | 8.00mm | 14 | 7 | 28 | | | | | |
| 09 Mar 88 | AEM100-10mm-10mm | *10.00mm | *10.00mm | 14 | 7 | 28 | | | | | |
| | AEM100-11mm-7mm | *11.00mm | 7.00mm | 14 | 7 | 28 | | | | | |
| | AEM100-11mm-11mm | *11.00mm | *11.00mm | 14 | 7 | 28 | | | | | |
| | AEM100-12mm-6mm | *12.00mm | 6.00mm | 14 | 7 | 28 | | | | | |
| | AEM100-12mm-9mm | *12.00mm | 9.00mm | 14 | 7 | 28 | | | | | |
| 09 Mar 88 | AEM100-12mm-10mm | *12.00mm | *10.00mm | 14 | 7 | 28 | | | | | |
| 09 Mar 88 | AEM100-12mm-12mm | *12.00mm | *12.00mm | 14 | 7 | 28 | | | | | |
| 14 Feb 00 | AEM100-16-12 | *.500in | .375in | 14 | 7 | 28 | | | | | |
| 09 Mar 88 | AEM100-14mm-5mm | *14.00mm | 5.00mm | 14 | 7 | 28 | | | | | |
| | AEM100-14mm-12 | *14.00mm | .375in | 14 | 7 | 28 | | | | | |
| | AEM100-14mm-11mm | *14.00mm | *11.00mm | 14 | 7 | 28 | | | | | |
| | AEM100-14mm-12mm | *14.00mm | *12.00mm | 14 | 7 | 28 | | | | | |

* NOTE: Bores greater than .375in Dia: bore depth is .400in

NOTICE: THE INFORMATION AND DATA CONTAINED HEREIN IS CONSIDERED PROPRIETARY TO HELICAL PRODUCTS COMPANY, INC., AND SHALL REMAIN THE EXCLUSIVE PROPERTY OF HELICAL. THE HOLDER WILL ASSUME CUSTODY AND CONTROL THAT THIS DOCUMENT WILL NOT BE COPIED, REPRODUCED OR DISCLOSED WITHOUT THE EXPRESS WRITTEN CONSENT OF HELICAL. POSSESSION OF THIS DOCUMENT DOES NOT CONSTITUTE A GRANT TO MANUFACTURE ANY ITEMS.

ADDITIONAL BORE SIZES AVAILABLE UPON REQUEST

| | |
|-----------|----------------------------|
| APPROVALS | DATE |
| DRAWN | |
| CHECKED | |
| PRODN | |
| ISSUED | 12/16/2009 7: 55: 43 AM |

HELICAL PRODUCTS CO. INC
P.O. BOX 1069 SANTA MARIA, CA. 93456 U.S.A
PHONE (805) 928-3851/FSCI3201

TITLE **HELICAL FLEXIBLE SHAFT COUPLING**

TABULATED BORE SIZES

DWG NO **AEM100**

Printed 12/16/2009 7: 55: 55 AM by larryvg

| ADDITION DATE | PART NUMBER | BORE TOLERANCES | | TORQUES (lbin) | | | TORSIONAL FLEXIBILITY deg/lbin | MASS MOMENT OF INERTIA | COMMENTS | A1 | A2 | |
|---------------|------------------|----------------------|--------|--------------------|---------------|--------------------|--------------------------------|------------------------|----------|----|----|-----------|
| | | + .002in - .000in | or | + .05mm - .00mm | Non-reversing | Shock or Reversing | | | | | | Momentary |
| | | A1 Dia | A2 Dia | | | | | | | | | |
| | AEM100-15mm-8mm | *15.00mm | | 8.00mm | 14 | 7 | 28 | | | | | |
| | AEM100-15mm-15mm | *15.00mm | * | 15.00mm | 14 | 7 | 28 | | | | | |

*** NOTE: Bores greater than .375in Dia: bore depth is .400in**

NOTICE: THE INFORMATION AND DATA CONTAINED HEREIN IS CONSIDERED PROPRIETARY TO HELICAL PRODUCTS COMPANY, INC., AND SHALL REMAIN THE EXCLUSIVE PROPERTY OF HELICAL. THE HOLDER WILL ASSUME CUSTODY AND CONTROL THAT THIS DOCUMENT WILL NOT BE COPIED, REPRODUCED OR DISCLOSED WITHOUT THE EXPRESS WRITTEN CONSENT OF HELICAL. POSSESSION OF THIS DOCUMENT DOES NOT CONSTITUTE A GRANT TO MANUFACTURE ANY ITEMS.

ADDITIONAL BORE SIZES AVAILABLE UPON REQUEST

| | |
|-----------|----------------------------|
| APPROVALS | DATE |
| DRAWN | |
| CHECKED | |
| PRODN | |
| ISSUED | 12/16/2009 7: 55: 43 AM |

HELICAL PRODUCTS CO. INC
P.O. BOX 1069 SANTA MARIA, CA. 93456 U.S.A
PHONE (805) 928-3851 FSCI320I

TITLE **HELICAL FLEXIBLE SHAFT COUPLING**

TABULATED BORE SIZES

DWG NO **AEM100**

Printed 12/16/2009 7: 55: 55 AM by larryg