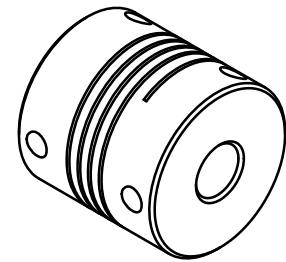
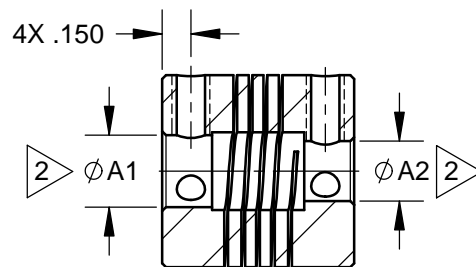
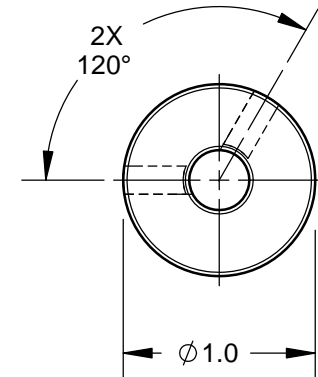
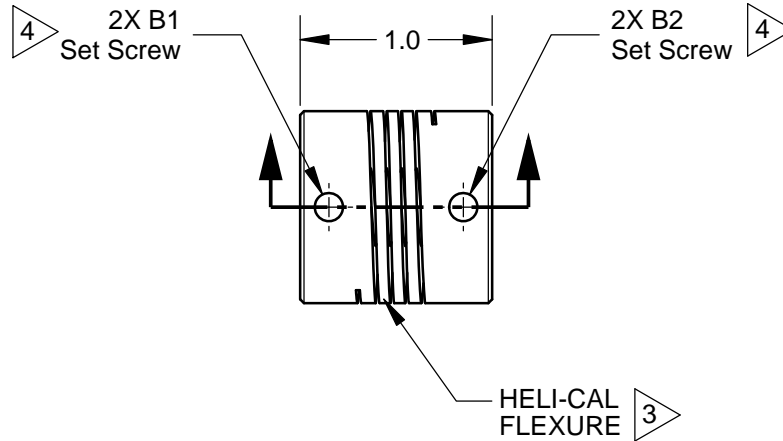


NOTES:

- 1 Refer to Secondary Sheet for Tabulated Data.
- 2 ϕ A1 and ϕ A2 shafts may near butt except:

When any Bore $> \phi .375$ the component shaft MAX penetration is .255 or when both Bores $> \phi .375$ the component shaft MAX penetration is .255 & the MIN shaft end to shaft end is .490
- 3 Hubs and HELI-CAL FLEXURE are made from a single piece of material.
- 4 Set Screw attachment, hex socket, ISO std., cup point set screw furnished: both hubs.
- 5 Backlash: None. No lubrication required.
- 6 Permitted axial motion from free length: $\pm .010$
- 7 RPM: Up to 10,000 depending upon application.
- 8 Torsional Flexibility: Refer to Tabulated Data.
- 9 Working torque ratings are based upon continuous duty with noted misalignments applied separately and may be increased with improved alignment: Refer to Tabulated Data.
- 10 Permissible shaft misalignment: Angular, up to 5°
Offset, up to .010 (FIM, .020)
- 11 Weight based on ARM100-12-10




NOTICE: THE INFORMATION AND DATA CONTAINED HEREIN IS CONSIDERED PROPRIETARY TO HELICAL PRODUCTS COMPANY, AND SHALL REMAIN THE EXCLUSIVE PROPERTY OF HELICAL. THE HOLDER WILL ASSUME CUSTODY AND CONTROL THAT THIS DOCUMENT WILL NOT BE COPIED, REPRODUCED OR DISCLOSED WITHOUT THE EXPRESS WRITTEN CONSENT OF HELICAL. POSSESSION OF THIS DOCUMENT DOES NOT CONSTITUTE A GRANT TO MANUFACTURE ANY ITEM. Copyright HELICAL PRODUCTS CO.

11-26-14	---	ECR#14102000 Added calc. weight	DCE	EK
07-24-13	---	Redrawn in Solidworks	CL	JAJ/EK
11-17-09	---	Finish was Chromic Acid Anodize; Updated GD&T	HG	JAJ
DATE	LTR	REVISION	APVR	

Unless otherwise specified all tolerances and dimensions are in inches.

Inch	Metric
X/XX \pm 1/64	X \pm 0.5mm
.XX \pm .01	X.X \pm 0.25mm
.XXX \pm .005	X.XX \pm 0.15mm
Angles $\pm 2^\circ$	

Break sharp corners .010 MAX
All surface finish 63 roughness
Do Not Scale Drawing



HELICAL
PRODUCTS COMPANY

901 West McCoy Lane
SANTA MARIA, CA. 93456 U.S.A.
PHONE (805) 928-3851 FSC13201

DRAWN BY MM	DATE 09-13-79	TITLE HELICAL FLEXIBLE SHAFT COUPLING
CHECKED BY MC	DATE 09-13-79	MATL 7075-T6 Aluminum Alloy
APPRVD BY APA	DATE 09-13-79	FINISH Anodize IAW HPS1000
WEIGHT (calculated) 27 g		DRAWING NUMBER ARM100
SHEET 1 of 3		REV

TABULATED DATA

UOS all dimensions are in inches.
Copyright HELICAL PRODUCTS CO

MATERIAL: 7075-T6 Aluminum Alloy

FINISH: Anodize IAW HPS1000

Drawing Number

ARM100

REV

DO NOT SCALE DRAWING

SHT 2 of 3

ITEM DESCRIPTION (Part Number)	BORE SIZES		SET SCREW		TORQUES (lbin)		
	Ø A1	Ø A2	B1	B2	Momentary	Non-Reversing	Shock or Reversing
ARM100-4mm-4mm	4.00mm	4.00mm	M2 X 0.4	M2 X 0.4	36	18	9
ARM100-6mm-6mm	6.00mm	6.00mm	M5 X 0.8	M5 X 0.8	36	18	9
ARM100-8-3mm	.250in	3.00mm	M5 X 0.8	M2 X 0.4	36	18	9
ARM100-8-6	.250in	.188in	M5 X 0.8	M4 X 0.5	36	18	9
ARM100-8-6mm	.250in	6.00mm	M5 X 0.8	M5 X 0.8	36	18	9
ARM100-8-8	.250in	.250in	M5 X 0.8	M5 X 0.8	36	18	9
ARM100-7mm-4mm	7.00mm	4.00mm	M5 X 0.8	M2 X 0.4	32	16	8
ARM100-7mm-6mm	7.00mm	6.00mm	M5 X 0.8	M5 X 0.8	32	16	8
ARM100-7mm-7mm	7.00mm	7.00mm	M5 X 0.8	M5 X 0.8	32	16	8
ARM100-10-8	.313in	.250in	M5 X 0.8	M5 X 0.8	32	16	8
ARM100-10-10	.313in	.313in	M5 X 0.8	M5 X 0.8	32	16	8
ARM100-8mm-4mm	8.00mm	4.00mm	M5 X 0.8	M2 X 0.4	32	16	8
ARM100-8mm-5mm	8.00mm	5.00mm	M5 X 0.8	M4 X 0.5	32	16	8
ARM100-8mm-6mm	8.00mm	6.00mm	M5 X 0.8	M5 X 0.8	32	16	8
ARM100-8mm-8	8.00mm	.250in	M5 X 0.8	M5 X 0.8	32	16	8
ARM100-8mm-7mm	8.00mm	7.00mm	M5 X 0.8	M5 X 0.8	32	16	8
ARM100-8mm-8mm	8.00mm	8.00mm	M5 X 0.8	M5 X 0.8	32	16	8
ARM100-9mm-5mm	9.00mm	5.00mm	M5 X 0.8	M4 X 0.5	30	15	7
ARM100-9mm-8	9.00mm	.250in	M5 X 0.8	M5 X 0.8	30	15	7
ARM100-9mm-8mm	9.00mm	8.00mm	M5 X 0.8	M5 X 0.8	30	15	7
ARM100-9mm-9mm	9.00mm	9.00mm	M5 X 0.8	M5 X 0.8	30	15	7
ARM100-9.5mm-9.5mm	9.50mm	9.50mm	M5 X 0.8	M5 X 0.8	28	14	7
ARM100-12-6mm	.375in	6.00mm	M5 X 0.8	M5 X 0.8	28	14	7
ARM100-12-8	.375in	.250in	M5 X 0.8	M5 X 0.8	28	14	7
ARM100-12-10	.375in	.313in	M5 X 0.8	M5 X 0.8	28	14	7
ARM100-12-8mm	.375in	8.00mm	M5 X 0.8	M5 X 0.8	28	14	7
ARM100-12-12	.375in	.375in	M5 X 0.8	M5 X 0.8	28	14	7
ARM100-9.6mm-6mm	9.60mm	6.00mm	M5 X 0.8	M5 X 0.8	28	14	7
ARM100-9.6mm-8mm	9.60mm	8.00mm	M5 X 0.8	M5 X 0.8	28	14	7

TABULATED DATA

UOS all dimensions are in inches.
Copyright HELICAL PRODUCTS CO

MATERIAL: 7075-T6 Aluminum Alloy

FINISH: Anodize IAW HPS1000

Drawing Number

ARM100

REV

DO NOT SCALE DRAWING

SHT 3 of 3

ITEM DESCRIPTION (Part Number)	BORE SIZES		SET SCREW		TORQUES (lbin)		
	∅A1	∅A2	B1	B2	Momentary	Non-Reversing	Shock or Reversing
ARM100-10mm-5mm	10.00mm	5.00mm	M5 X 0.8	M4 X 0.5	28	14	7
ARM100-10mm-6mm	10.00mm	6.00mm	M5 X 0.8	M5 X 0.8	28	14	7
ARM100-10mm-7mm	10.00mm	7.00mm	M5 X 0.8	M5 X 0.8	28	14	7
ARM100-10mm-8mm	10.00mm	8.00mm	M5 X 0.8	M5 X 0.8	28	14	7
ARM100-10mm-9mm	10.00mm	9.00mm	M5 X 0.8	M5 X 0.8	28	14	7
ARM100-10mm-9.5mm	10.00mm	9.50mm	M5 X 0.8	M5 X 0.8	28	14	7
ARM100-10mm-10mm	10.00mm	10.00mm	M5 X 0.8	M5 X 0.8	28	14	7
ARM100-10.16mm-8mm	10.16mm	8.00mm	M5 X 0.8	M5 X 0.8	28	14	7
ARM100-11mm-11mm	11.00mm	11.00mm	M5 X 0.8	M5 X 0.8	28	14	7
ARM100-12mm-5mm	12.00mm	5.00mm	M5 X 0.8	M4 X 0.5	28	14	7
ARM100-12mm-6mm	12.00mm	6.00mm	M5 X 0.8	M5 X 0.8	28	14	7
ARM100-12mm-8mm	12.00mm	8.00mm	M5 X 0.8	M5 X 0.8	28	14	7
ARM100-12mm-9mm	12.00mm	9.00mm	M5 X 0.8	M5 X 0.8	28	14	7
ARM100-12mm-12	12.00mm	.375in	M5 X 0.8	M5 X 0.8	28	14	7
ARM100-12mm-10mm	12.00mm	10.00mm	M5 X 0.8	M5 X 0.8	28	14	7
ARM100-12mm-11mm	12.00mm	11.00mm	M5 X 0.8	M5 X 0.8	28	14	7
ARM100-12mm-12mm	12.00mm	12.00mm	M5 X 0.8	M5 X 0.8	28	14	7
ARM100-12.5mm-8mm	12.50mm	8.00mm	M5 X 0.8	M5 X 0.8	28	14	7
ARM100-14mm-6.25mm	14.00mm	6.25mm	M5 X 0.8	M5 X 0.8	28	14	7
ARM100-15mm-8mm	15.00mm	8.00mm	M5 X 0.8	M5 X 0.8	28	14	7
ARM100-15mm-15mm	15.00mm	15.00mm	M5 X 0.8	M5 X 0.8	28	14	7
ARM100-16mm-5mm	16.00mm	5.00mm	M5 X 0.8	M4 X 0.5	28	14	7