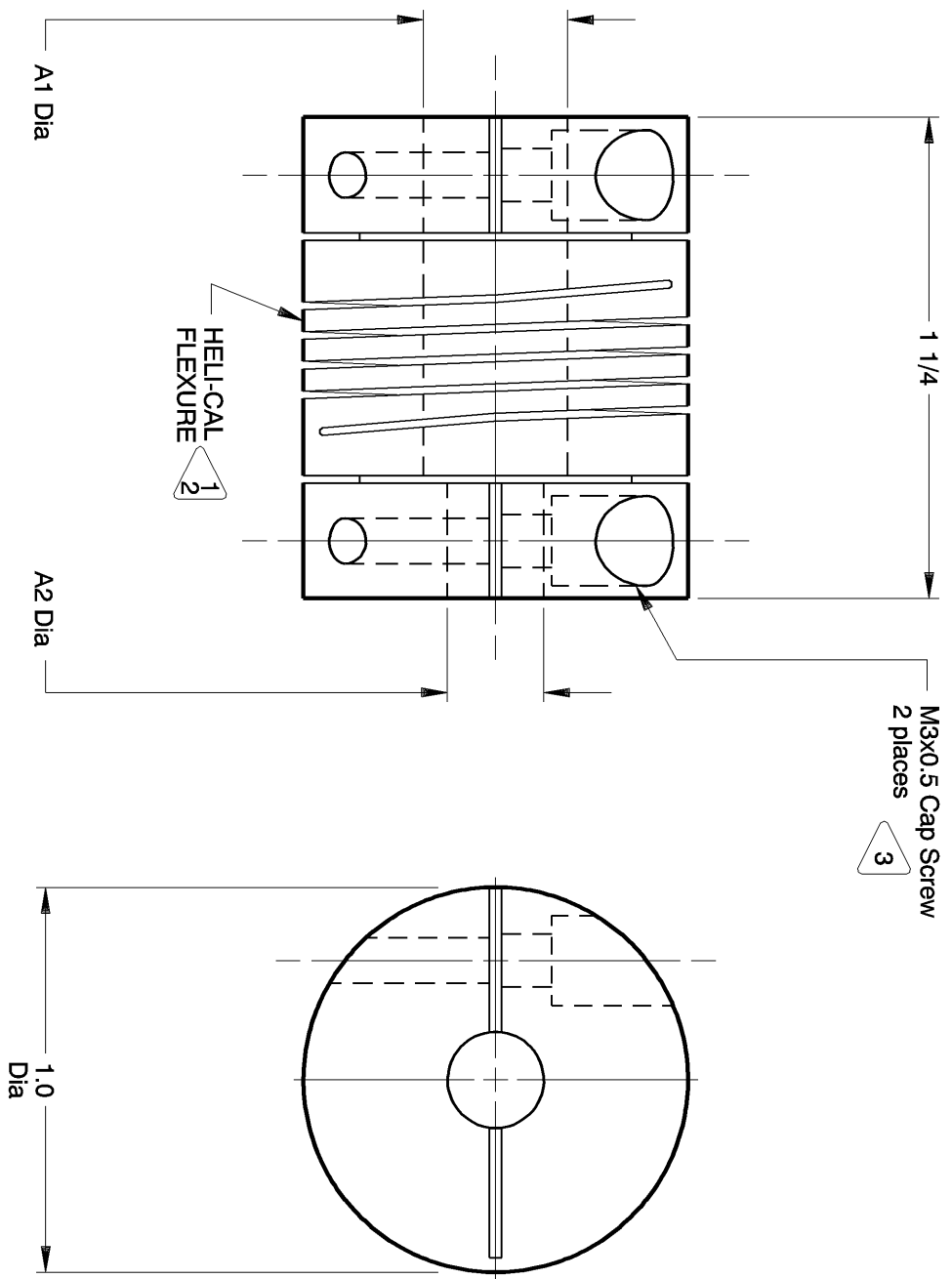


NOTES: See Tabulated Sheet

- 1 Straight thru bore. Shafts must not enter flexure area during operation.*
Maximum shaft penetration: .400in.
Minimum shaft end to shaft end: .450in.
*A2 shaft may enter flexure area if smaller than opposing bore: data available.
- 2 Hubs and HELI-CAL FLEXURE are made from a single piece of material.
- 3 Integral Clamp attachment, hex. socket, ISO std., cap screw furnished: both hubs.
- 4 Backlash: None.
No lubrication required.
- 5 Permitted axial motion from free length: ±.010in.
RPM: Up to 10,000, depending upon application.
- 6 Working torque ratings are based upon continuous duty with noted misalignments applied separately and may be increased with improved alignment:
See Tabulated Sheet
- 7 Permissible shaft misalignment:
Angular, up to 5 degrees.
Offset, up to .010in. (TIR, .020in.)
- 8 Part will have a 1.136in. Clearance Diameter on both ends when any bore is over .444in. thru .588in.



HCM100-12-8 SHOWN

NOTICE: THE INFORMATION AND DATA CONTAINED HEREIN IS CONSIDERED PROPRIETARY TO HELICAL PRODUCTS COMPANY, INC., AND SHALL REMAIN THE EXCLUSIVE PROPERTY OF HELICAL PRODUCTS COMPANY. IT IS STRICTLY CONFIDENTIAL AND NOT TO BE REPRODUCED OR DISCLOSED WITHOUT THE EXPRESS WRITTEN CONSENT OF HELICAL PRODUCTS COMPANY. THIS DOCUMENT DOES NOT CONSTITUTE A GRANT TO MANUFACTURE ANY ITEMS. DO NOT SCALE DRAWINGS.

DATE	LTR	REVISION	BJM	MC
2-25-99		No revision		
Clerical format update/				

Unless otherwise noted dimensions in inches.
Tolerances are:
Fractions: ± 1/64
Decimals: .XX ± .010
.XXX ± .005
.XXXX ± .0010
Angles: ± 2 degrees
Break sharp corners .010 max.

APPROVALS		DATE	TITLE		
DRAWN	BJM	9-13-89		HELLICAL PRODUCTS CO., INC. P.O. BOX 1069 SANTA MARIA, CA 93456 U.S.A PHONE (805) 928-3851 FSC13201	
CHECKED	MC	9-29-89			
PRODN	DH	10-4-89			
ISSUED			HELLICAL FLEXIBLE SHAFT COUPLING		
WEIGHT	109g (calc)		MATERIAL	17-4PH CRES	HT
SCALE	2/1	SIZE	FINISH	Natural	
			DWG NO	HCM100	

ADDITION DATE	PART NUMBER	BORE TOLERANCES		TORQUES (lb-in)			TORSIONAL FLEXIBILITY	MASS MOMENT OF INERTIA	COMMENTS
		A1 Dia	A2 Dia	Non-reversing	Shock or Reversing	Momentary			
28 Jun 88	HCM100-8-6	.250in	.188in	26	13	53			
	HCM100-8-8	.250in	.250in	26	13	53			
	HCM100-7mm-7mm	7.00mm	7.00mm	26	13	52			
27 Mar 02	HCM100-8mm-6mm	8.00mm	6.00mm	26	13	52			
	HCM100-8mm-8mm	8.00mm	8.00mm	26	13	52			
28 Jun 88	HCM100-12-12	.375in	.375in	22	11	44			
27 Nov 90	HCM100-10mm-8mm	*10.00mm	8.00mm	22	11	44			
07 Feb 90	HCM100-10mm-10mm	*10.00mm	*10.00mm	22	11	44			
	HCM100-11mm-6mm	*11.00mm	6.00mm	22	11	44			
	HCM100-11mm-11mm	*11.00mm	*11.00mm	22	11	44			
	HCM100-12mm-6mm	*12.00mm	6.00mm	22	11	44			
	HCM100-12mm-8mm	*12.00mm	8.00mm	22	11	44			
	HCM100-12mm-10mm	*12.00mm	*10.00mm	22	11	44			
07 Feb 90	HCM100-12mm-12mm	*12.00mm	*12.00mm	22	11	44			
	HCM100-16-6	*.500in	.188in	22	11	44			
20 Mar 00	HCM100-16-10mm	*.500in	*10.00mm	22	11	44			
	HCM100-14mm-12mm	*14.00mm	*12.00mm	22	11	44			
09 May 00	HCM100-14mm-14mm	*14.00mm	*14.00mm	22	11	44			

* NOTE: Bores greater than .375in Dia: bore depth is .310in

NOTICE: THE INFORMATION AND DATA CONTAINED HEREIN IS CONSIDERED PROPRIETARY TO HELICAL PRODUCTS COMPANY, INC., AND SHALL REMAIN THE EXCLUSIVE PROPERTY OF HELICAL. THE HOLDER WILL ASSUME CUSTODY AND CONTROL THAT THIS DOCUMENT WILL NOT BE COPIED, REPRODUCED OR DISCLOSED WITHOUT THE EXPRESS WRITTEN CONSENT OF HELICAL. POSSESSION OF THIS DOCUMENT DOES NOT CONSTITUTE A GRANT TO MANUFACTURE ANY ITEMS.

ADDITIONAL BORE SIZES AVAILABLE UPON REQUEST

APPROVALS	DATE	TITLE
DRAWN		HELICAL PRODUCTS CO., INC
CHECKED		P.O. BOX 1069 SANTA MARIA, CA, 93456 U.S.A
PRODN		PHONE (805) 928-3851(FSC13201)
ISSUED	4/25/2006 11:10:31 AM	HELICAL FLEXIBLE SHAFT COUPLING
		TABULATED BORE SIZES
		DWG NO HCM100