

NOTES: See Tabulated Sheet

1 Relief permits component shafts to near butt.

2 Hubs and HELI-CAL FLEXURE are made from a single piece of material.

3 Integral Clamp attachment, hex. socket, ISO std., cap screw furnished: both hubs.

4 Backlash: None. No lubrication required.

5 Permitted axial motion from free length:  $\pm .010$ in.

6 RPM: Up to 10,000, depending upon application.

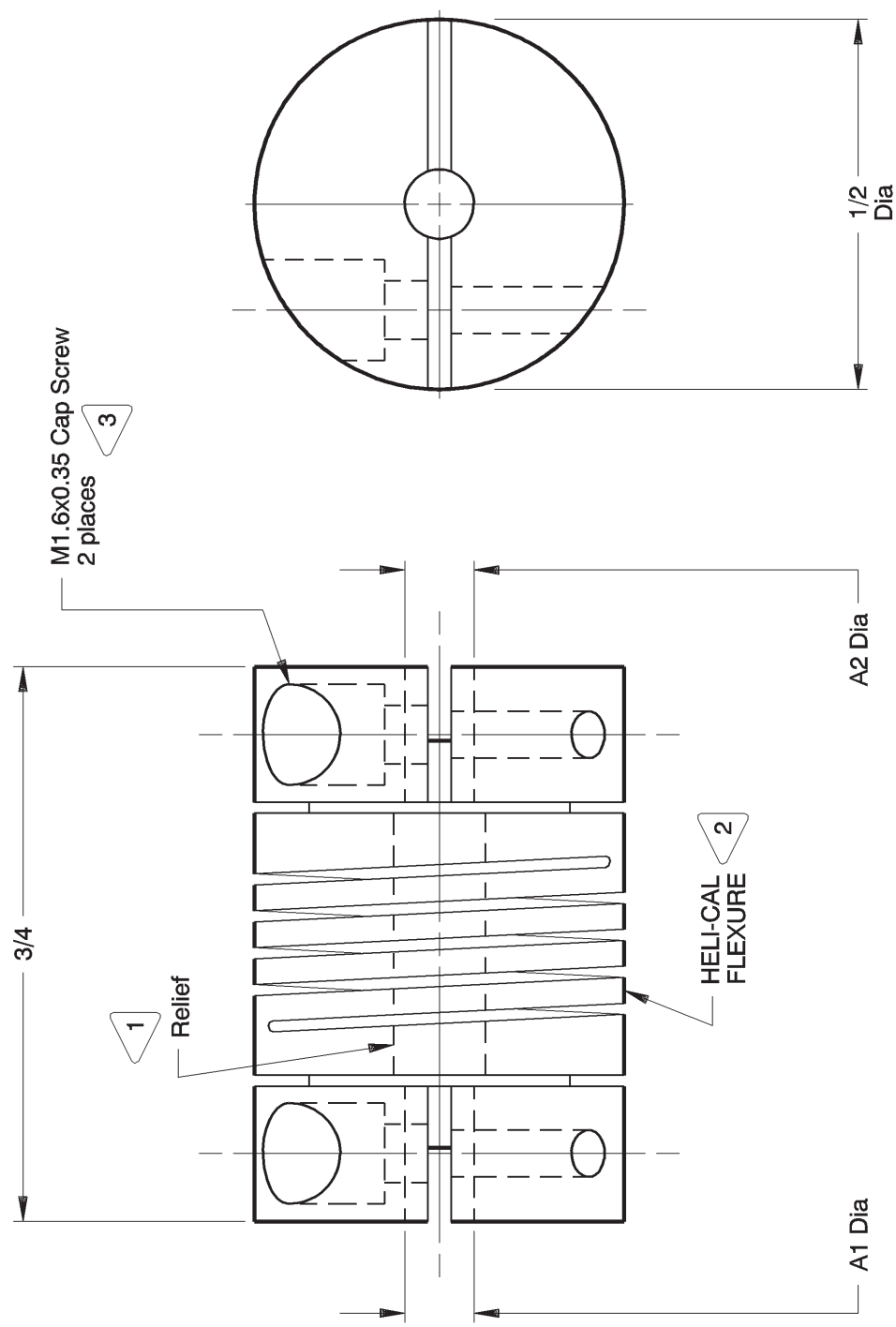
7 Working torque ratings are based upon continuous duty with noted misalignments applied separately and may be increased with improved alignment.

See Tabulated Sheet

8 Permissible shaft misalignment:

Angular, up to 5 degrees. Offset, up to .010in. (TIR, .020in.)

9 Part will have a .556in. Clearance Diameter on both ends when any bore is over .171in. thru .236in.



HCRM050-3-3 SHOWN

<p>NOTICE: THE INFORMATION AND DATA CONTAINED HEREIN IS CONSIDERED PROPRIETARY TO HELICAL PRODUCTS COMPANY, AND SHALL REMAIN THE EXCLUSIVE PROPERTY OF HELICAL. THE HOLDER WILL ASSUME CUSTODY AND CONTROL THAT THIS DOCUMENT WILL NOT BE COPIED, REPRODUCED OR DISCLOSED WITHOUT THE EXPRESS WRITTEN CONSENT OF HELICAL. POSSESSION OF THIS DOCUMENT DOES NOT CONSTITUTE A GRANT TO MANUFACTURE ANY ITEMS.</p> <p>DO NOT SCALE DRAWING.</p>		<p>APPROVALS</p> <p>DRAWN <b>JO</b></p> <p>CHECKED <b>MC</b></p> <p>PRODN <b>APA</b></p> <p>ISSUED</p> <p>WEIGHT <b>16g (calc)</b></p> <p>SCALE <b>4/1</b></p>	<p>DATE</p> <p><b>9-12-86</b></p> <p><b>9-16-86</b></p> <p><b>9-29-86</b></p>	<p>HELICAL PRODUCTS CO.</p> <p>901 W McCoy Ln SANTA MARIA, CA. 93456 U.S.A</p> <p>PHONE (805) 928-3851 FSC13201</p>
<p>Unless otherwise noted dimensions in inches.</p> <p>Tolerances are:                  Fractions: <math>\pm 1/64</math>                  Decimals: .XX <math>\pm .010</math>                  .XXX <math>\pm .005</math>                  .XXXX <math>\pm .0010</math>                  Angles: <math>\pm 2</math> degrees                  Break sharp corners .010 max.</p>		<p>TITLE</p> <p><b>HELICAL FLEXIBLE SHAFT COUPLING</b></p>	<p>MATERIAL</p> <p><b>17-4PH CRES</b></p>	<p>FINISH</p> <p><b>Natural</b></p>
<p>6-8-01</p> <p>DATE</p>	<p>LTR</p> <p>REVISION</p>	<p>DRW</p> <p>CHK</p>	<p>MC</p>	<p>HT</p>
<p>Clerical format update/ No revision</p>	<p>6-8-01</p>	<p>4/1</p>	<p>A</p>	<p>HCRM050</p>

ADDITION DATE	PART NUMBER	BORE TOLERANCES		TORQUES (lbin)			TORSIONAL FLEXIBILITY	MASS MOMENT OF INERTIA	COMMENTS
		+002in -000in	+05mm -00mm	Non-reversing	Shock or Reversing	Momentary			
		A1 Dia	A2 Dia						
25 May 88	HCRM050-3mm-3mm	3.00mm	3.00mm	3.5	1.8	7.1			
14 Oct 04	HCRM050-4-3mm	.125in	3.00mm	3.5	1.7	7.0			
25 May 88	HCRM050-4mm-3mm	* 4.00mm	3.00mm	3.5	1.7	7.0			
10 Feb 06	HCRM050-4mm-4	* 4.00mm	.125in	3.5	1.7	7.0			Clearance Diam.: .556in
18 Nov 03	HCRM050-6-4M	* .188in	.120in	3.5	1.7	7.0			Clearance Diam.: .556in
07 Apr 05	HCRM050-6mm-3mm	* 6.00mm	3.00mm	3.5	1.8	7.0			Clearance Diam.: .556in
20 Jul 17	HCRM050-6mm-4mm	* 6.00mm	.125in	3.5	1.8	7.0			Clearance Diam.: .556in
		* 5.00mm	* 4.00mm	3.5	1.8	7.0			Clearance Diam.: .556in
			3.00mm						

**\* NOTE: Bores greater than .125in Dia: bore depth is .191in**

NOTICE: THE INFORMATION AND DATA CONTAINED HEREIN IS CONSIDERED PROPRIETARY TO HELICAL PRODUCTS COMPANY, AND SHALL REMAIN THE EXCLUSIVE PROPERTY OF HELICAL. THE HOLDER WILL ASSUME CUSTODY AND CONTROL THAT THIS DOCUMENT WILL NOT BE COPIED, REPRODUCED OR DISCLOSED WITHOUT THE EXPRESS WRITTEN CONSENT OF HELICAL. POSSESSION OF THIS DOCUMENT DOES NOT CONSTITUTE A GRANT TO MANUFACTURE ANY ITEMS.

**ADDITIONAL BORE SIZES AVAILABLE UPON REQUEST**

APPROVALS	DATE	TITLE
DRAWN		HELICAL PRODUCTS CO.
CHECKED		901 W McCoY Ln SANTA MARIA, CA. 93456 U.S.A PHONE (805) 928-3851/FSCI3201
PRODN		HELICAL FLEXIBLE SHAFT COUPLING
ISSUED	4/24/2006 10:36:42 AM	<b>TABULATED BORE SIZES</b> DWG NO HCRM050