

NOTES:

1 Refer to Secondary Sheet for Tabulated Data.

2 ϕ A1 and ϕ A2 component shafts may near butt except:

When any Bore $> \phi$.197 the component shaft MAX penetration is .140.
or
When both Bores $> \phi$.197 the component shaft MAX penetration is .140 & the MIN shaft end to shaft end is .340.

3 Hubs and HELI-CAL FLEXURE are made from a single piece of material.

4 Set Screw attachment, hex socket, cup point set screw furnished: both hubs.

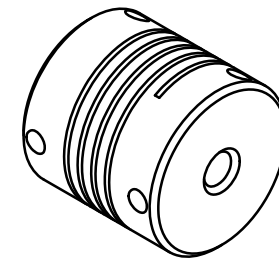
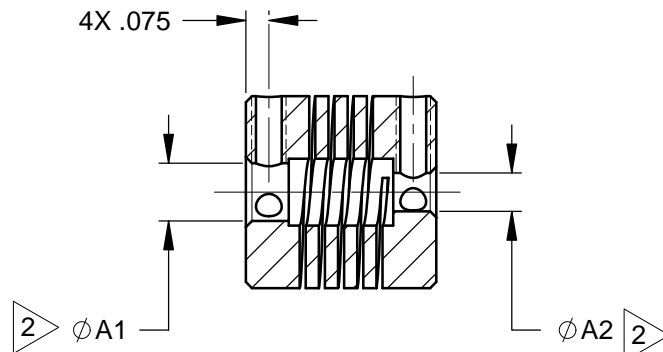
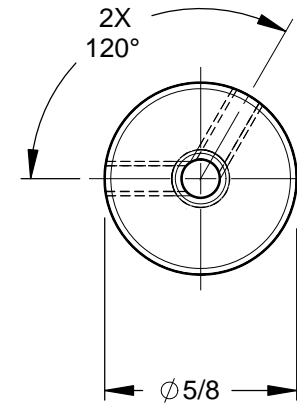
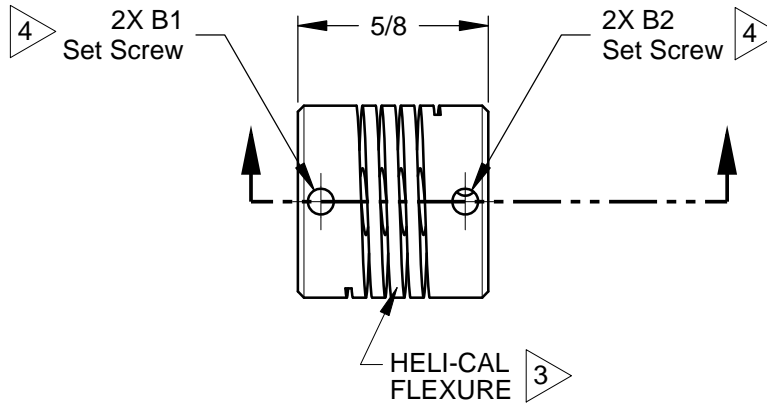
5 Backlash: None. No lubrication required.

6 Permitted axial motion from free length: \pm .010

7 RPM: Up to 10,000 depending upon application.

8 Working torque ratings are based upon continuous duty with noted misalignments applied separately and may be increased with improved alignment. Refer to Tabulated Data

9 Permissible shaft misalignment:
Angular, up to 5°
Offset, up to .010 (FIM, .020)



NOTICE: THE INFORMATION AND DATA CONTAINED HEREIN IS CONSIDERED PROPRIETARY TO HELICAL PRODUCTS COMPANY, INC., AND SHALL REMAIN THE EXCLUSIVE PROPERTY OF HELICAL. THE HOLDER WILL ASSUME CUSTODY AND CONTROL THAT THIS DOCUMENT WILL NOT BE COPIED, REPRODUCED OR DISCLOSED WITHOUT THE EXPRESS WRITTEN CONSENT OF HELICAL. POSSESSION OF THIS DOCUMENT DOES NOT CONSTITUTE A GRANT TO MANUFACTURE ANY ITEM

Copyright
HELICAL PRODUCTS CO. INC.

04-08-13	---	Redrawn in Solidworks	JAJ	EK
05-21-99	---	Clerical format update/ no revision	BJM	MC
DATE	LTR	REVISION	APVR	

UOS all tolerances & dimensions are in inches

Inch	Metric
X/XX = \pm 1/64	X = \pm 0.5mm
.XX = \pm .01	X.X = \pm 0.25mm
.XXX = \pm .005	X.XX = \pm 0.15mm

Angles \pm 2°
Break all sharp corners .010 MAX
All surface finish 63 roughness
Interpret IAW ASME Y14.5M

DO NOT SCALE DRAWING	SHEET 1 of 2
----------------------	--------------

 HELICAL PRODUCTS COMPANY, INC.		901 West McCoy Lane P.O. BOX 1069 SANTA MARIA, CA. 93456 U.S.A. PHONE (805) 928-3851 FSC13201	
DRAWN BY JO	DATE 01-16-87	TITLE HELICAL FLEXIBLE SHAFT COUPLING	
CHECKED BY MC	DATE 08-27-87	MATL 17-4PH CRES HT	
APPRVD BY GH	DATE 11-09-87	FINISH Natural	
TABULATED DATA ON SECONDARY SHEETS WEIGHT (calculated) 20g		DRAWING NUMBER HR062	
		REV	

TABULATED DATA

UOS all dimensions are in inches.
Copyright HELICAL PRODUCTS CO INC

MATERIAL: 17-4PH CRES HT

FINISH: Natural

Drawing Number

HR062

REV

DO NOT SCALE DRAWING

SHT 2 of 2

ITEM DESCRIPTION (Part Number)	BORE SIZES		SET SCREW		TORQUES (lbin)		
	∅A1	∅A2	B1	B2	Non-Reversing	Shock or Reversing	Momentary
HR062-4-4	.125in	.125in	#4-40	#4-40	7	3	14
HR062-5-4	.157in	.125in	#4-40	#4-40	6	3	13
HR062-5-5	.157in	.157in	#4-40	#4-40	6	3	13
HR062-4mm-4mm	4.00mm	4.00mm	#4-40	#4-40	6	3	13
HR062-6-3mm	.188in	3mm	#4-40	#4-40	6	3	13
HR062-6-4	.188in	.125in	#4-40	#4-40	6	3	13
HR062-6-5	.188in	.157in	#4-40	#4-40	6	3	13
HR062-6-6	.188in	.188in	#4-40	#4-40	6	3	13
HR062-5mm-6	5.00mm	.188in	#4-40	#4-40	6	3	13
HR062-6mm-4mm	6.00mm	4.00mm	#4-40	#4-40	6	3	13
HR062-6mm-5mm	6.00mm	5.00mm	#4-40	#4-40	6	3	13
HR062-6mm-6mm	6.00mm	6.00mm	#4-40	#4-40	6	3	13
HR062-8-5	.250in	.157in	#4-40	#4-40	6	3	13
HR062-8-6	.250in	.188in	#4-40	#4-40	6	3	13
HR062-8-6mm	.250in	6.00mm	#4-40	#4-40	6	3	13
HR062-8-8	.250in	.250in	#4-40	#4-40	6	3	13
HR062-8mm-6	8.00mm	.188in	#4-40	#4-40	6	3	13
HR062-12-4	.375in	.125in	#4-40	#4-40	6	3	13
HR062-12-6	.375in	.188in	#4-40	#4-40	6	3	13