

NOTES: See Tabulated Sheet

1 Relief permits component shafts to near butt.

2 Hubs and HELI-CAL FLEXURE are made from a single piece of material.

3 Set Screw attachment, hex. socket, ISO std., cup point set screw furnished: both hubs. Set Screw size based on bore size:

.094in thru .187in : M2x0.4
.188in thru .630in : M3x0.5

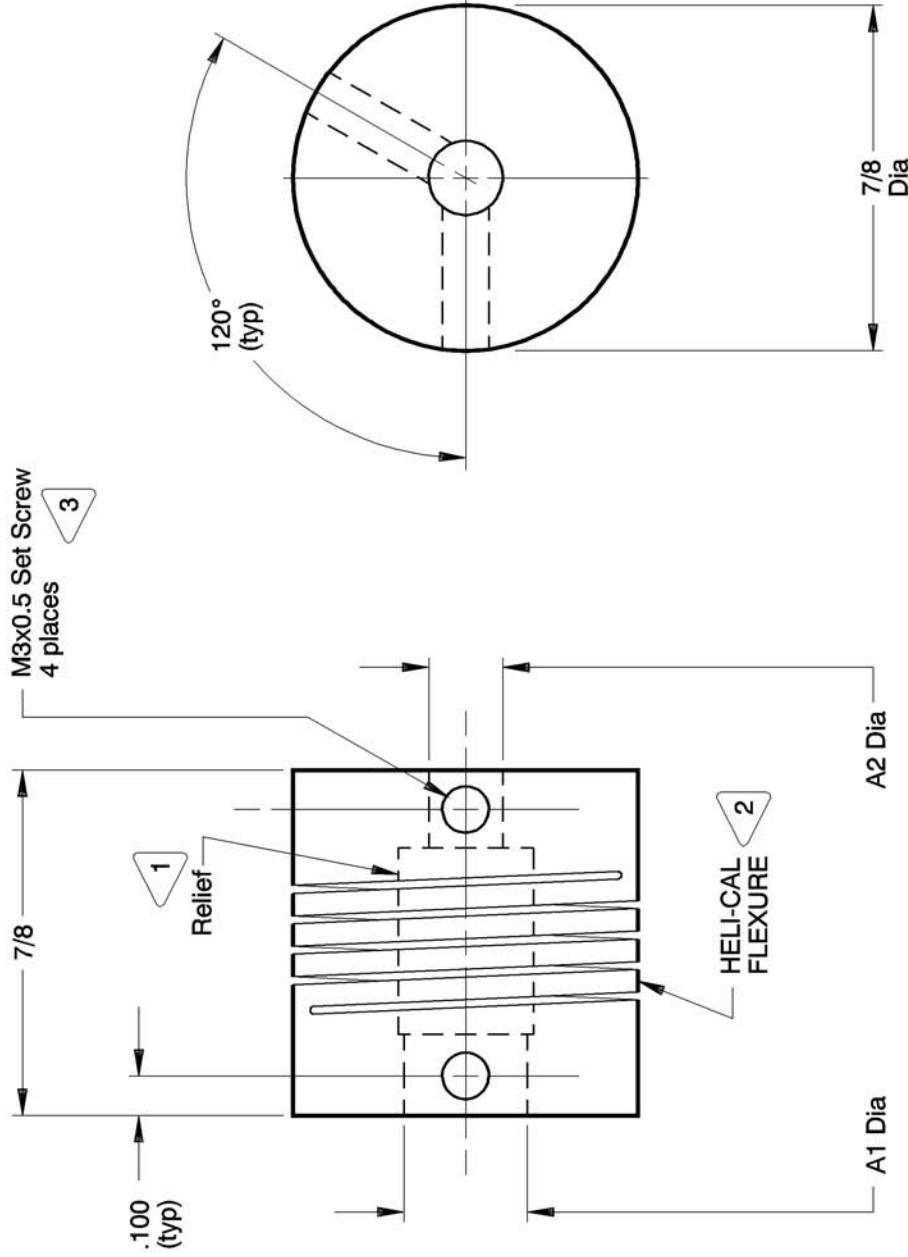
4 Backlash: None. No lubrication required.

5 Permitted axial motion from free length: $\pm .010$ in.

6 RPM: Up to 10,000, depending upon application.

7 Working torque ratings are based upon continuous duty with noted misalignments applied separately and may be increased with improved alignment. See Tabulated Sheet

8 Permissible shaft misalignment:
Angular, up to 5 degrees. Offset, up to .010in. (TIR, .020in.)



HRM087-10-6 SHOWN

NOTICE: THE INFORMATION AND DATA CONTAINED HEREIN IS CONSIDERED PROPRIETARY TO HELICAL PRODUCTS COMPANY, INC., AND SHALL REMAIN THE EXCLUSIVE PROPERTY OF HELICAL. THE HOLDER WILL ASSUME CUSTODY AND CONTROL THAT THIS DOCUMENT WILL NOT BE COPIED, REPRODUCED OR DISCLOSED WITHOUT THE EXPRESS WRITTEN CONSENT OF HELICAL. POSSESSION OF THIS DOCUMENT DOES NOT CONSTITUTE A GRANT TO MANUFACTURE ANY ITEMS. DO NOT SCALE DRAWING.

5-24-99	DATE	LTR	REVISION	BJM	MC	CHK
Clerical format update/ No revision						

Unless otherwise noted dimensions in inches.
Tolerances are:
Fractions: $\pm 1/64$
Decimals: .XX $\pm .010$
.XXX $\pm .005$
.XXXX $\pm .0010$
Angles: ± 2 degrees
Break sharp corners
.010 max.

APPROVALS	DATE
DRAWN BJM	9-13-89
CHECKED MC	9-21-89
PRODN DH	10-2-89
ISSUED	
WEIGHT	57g (calc)
SCALE	2/1
SIZE	A

TITLE	HELI-CAL FLEXIBLE SHAFT COUPLING
MATERIAL	17-4PH CRES
FINISH	Natural
HT	HT
DWG NO	HRM087

HELICAL PRODUCTS CO., INC.
P.O. BOX 1069 SANTA MARIA, CA. 93456 U.S.A.
PHONE (805) 928-3851 FSC13201

